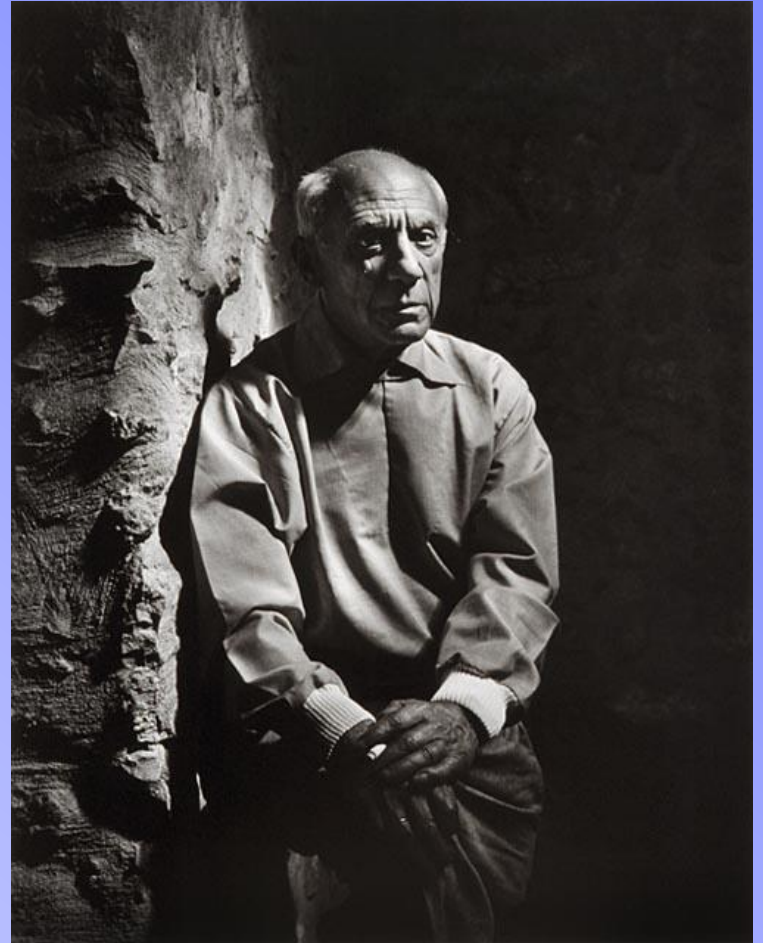


# Pablo Picasso

1881-1973

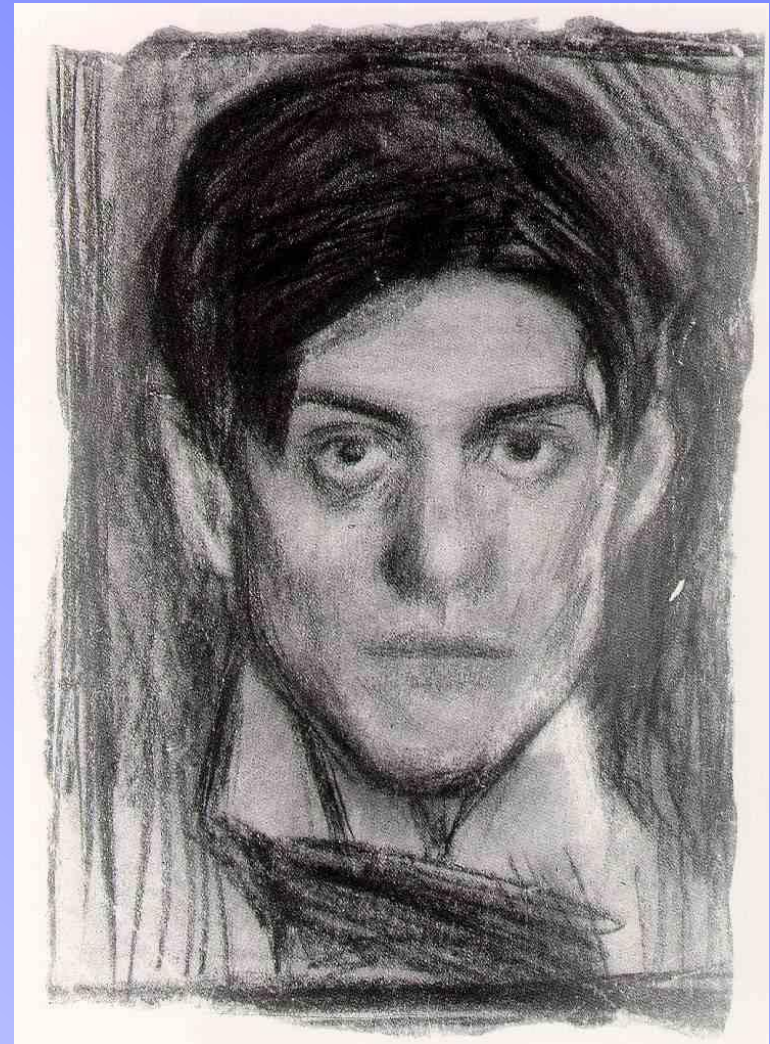
- Born in Spain
- Called a prodigy at the age of 14
- Father was a painter and art teacher







*Self-Portrait, 1899-1900*



*Self-portrait, 1899-1900*

Picasso's technical skill level





*Gertrude Stein, 1906*



*Self-portrait with Palette, 1906*

# The Early Years



*Lady in Blue, 1901*



*Moulin de la Galette, 1900*

What elements of art are in these paintings?



# Blue Period

## 1901-1904



*The Tragedy, 1903*

- Picasso chose blue deliberately to express feelings
- Most loved work because it conformed to reality

**What feelings or emotions do you think the blue expresses?**



*Self-Portrait, 1901*



*The Old Guitarist, 1903*

Which do you like better?

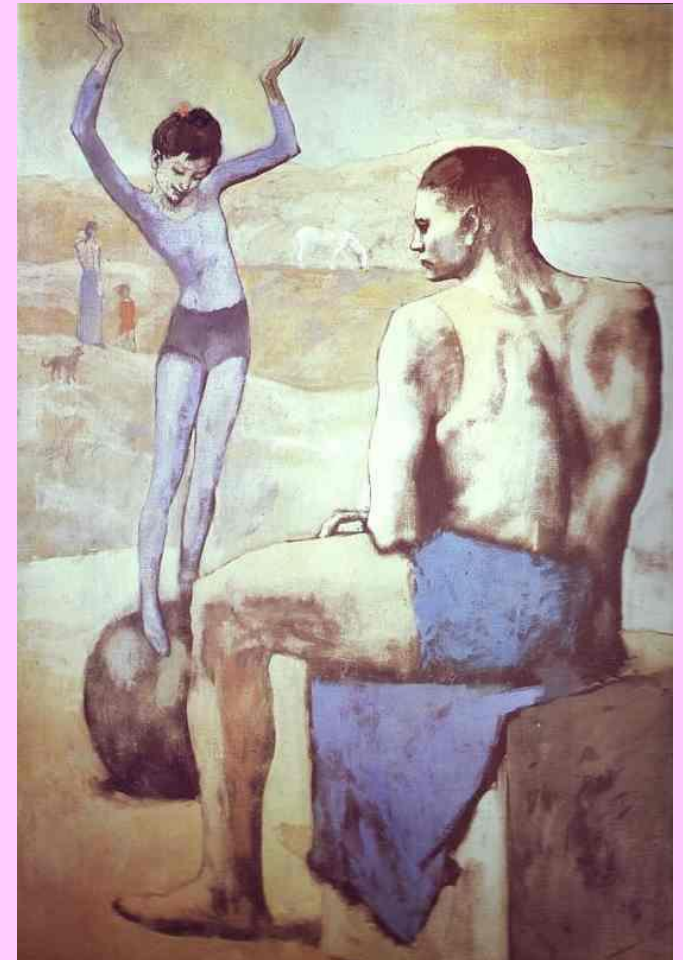


# Rose Period 1904-1906 ~

characterized by pale pink & circus people.



*Family of Saltimbanques, 1905*



Realistic or Abstract?

*Acrobat on a Ball, 1905*



What do you  
think the main  
idea of the  
“Rose” art is?

What does  
pink represent  
to you?

To Picasso?

(tenderness &  
fragility)



Carnies,  
small  
hands....!

# Beginnings of Cubism



*Picasso, Factory at Horta de Ebro, 1909*



*Cezanne, The Sea at L'Estaque, 1879*

- Admired Paul Cezanne
- Geometric forms
- Picasso and Braque were the leaders of Cubism
- **Cubism**-20<sup>th</sup> century art movement, in which artists depicted their subjects with multiple sides or facets. Made public mad...WHY?
- **Analytic**- breaking apart forms and “analysis” of objects
- **Synthetic**- later phase of cubism in which painted elements are combined with commonplace materials (like collage)



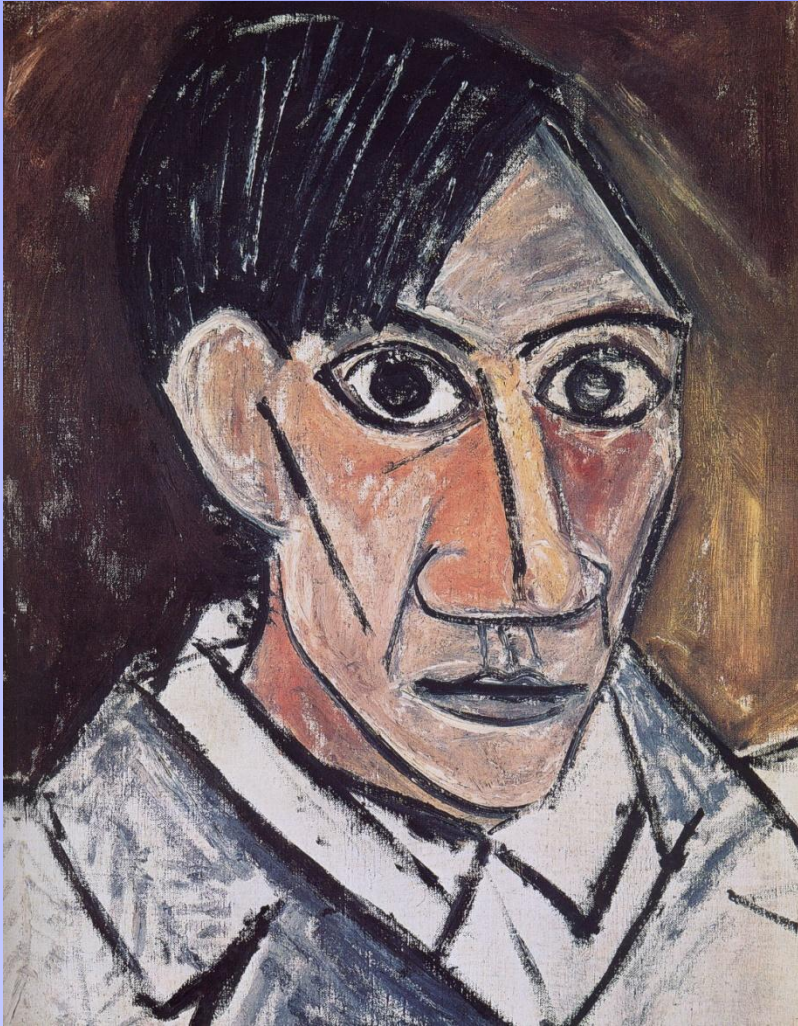
*Les Desmoiselles d'Avignon*  
(*Dam-wa-ZEL DAV-in-yon*), 1907

- Represented first step toward the most important art movements of 20th century
- Friends were shocked by this artwork

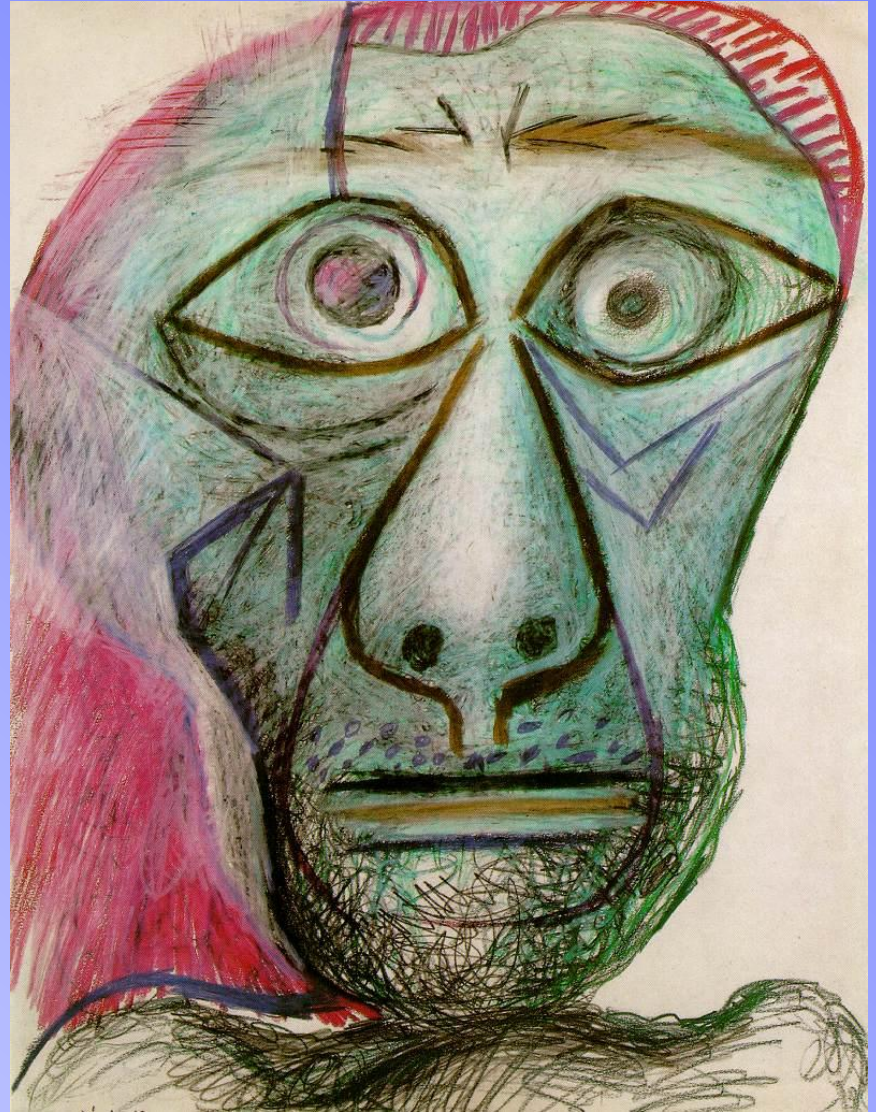




Why do you think Picasso painted like this???



*Self-Portrait, 1907*



*Self-Portrait*

New ways of showing reality!



# The idea of 3D on a flat surface



*Cat Catching a Bird, 1939*



# Analytical Cubism —objects so broken up you can barely recognize the form!



*Portrait of Ambroise Vollard, 1910*



*Portrait of Wilhelm Uhde, 1910*



# Synthetic Cubism



*Still Life with Chair Caning, 1912*

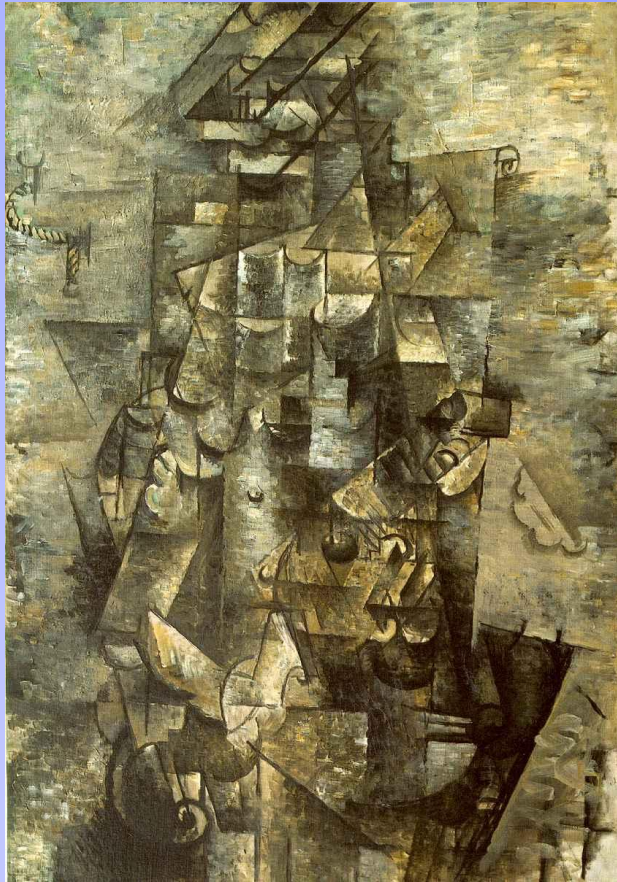


*The Violin, 1913*

What influenced Picasso when making these?



# Other Cubists



Braque, *Man with a Guitar*,  
1911



Juan Gris, *Portrait of  
Picasso*, 1912



Fernand Leger, *The Wedding*, 1911



# *Guernica, 1937*

What do you see in this mural?  
What do you think influenced Picasso to make this?  
Do you think it made an impact on History?



*(Civil War in Spain when German bombers attacked the small town... symbolized disgust about the cruelty of war.)*



# Portraits with Multiple Views



Picasso would  
combine  
several points  
of view &  
overlap  
them....

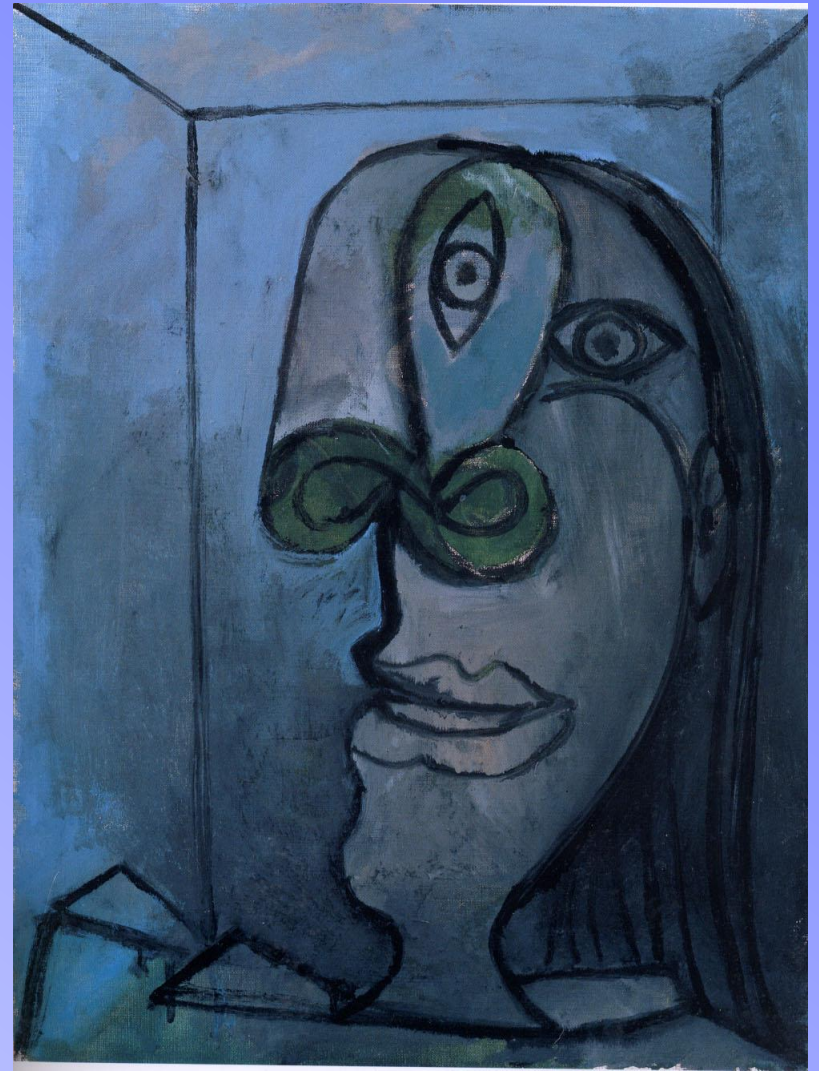
This idea  
helped start  
20<sup>th</sup> cent.  
Abstract art!



Which do you like the most/least? Why?



*Weeping Woman, 1937*



*Head of a Woman with Green Nostrils on a Dark Blue Ground, 1938*



Distortions result from wanting to show everything on one canvas.



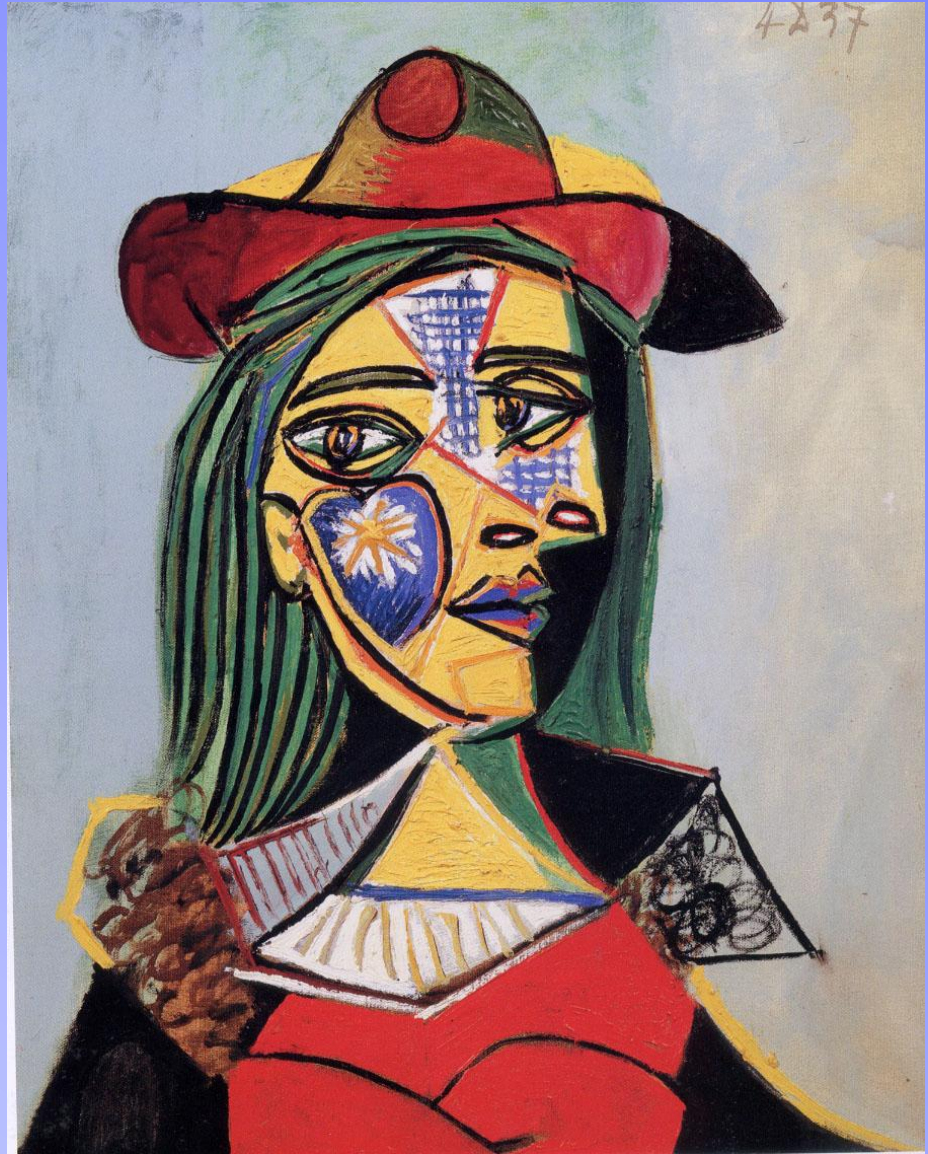
*Portrait de Sylvette, 1954*



What are the main elements of art?



*Women with a Green Hat and  
Brooch, 1941*



*Woman with a Hat and Fur, 1937*



Would you pay to have your portrait done like this?!



*Marie-Therese, 1937*

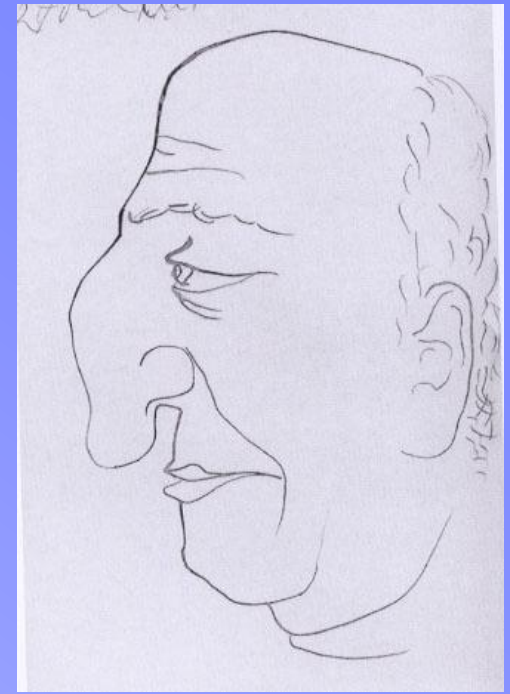


*Portrait of Nusch Ehuard, 1937*



# Assignment

1. Create **2 CONTOUR LINE DRAWINGS** of frontal and profile view
2. Combine frontal & profile together in one sketch.
3. Make drawings **angular or Cubist style**



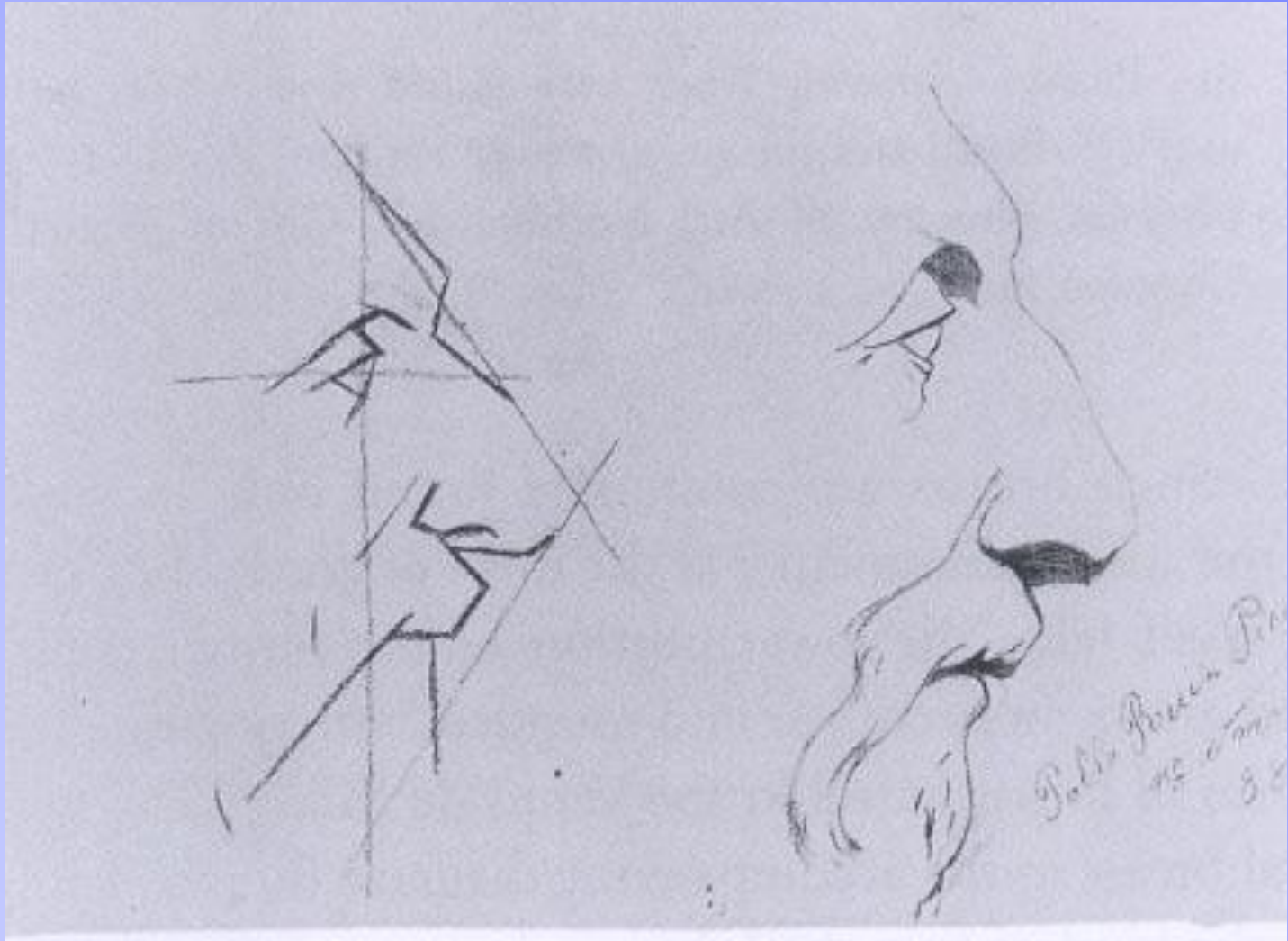
# Characteristics of Contour Line Drawings



- Outlines of the object
- No sketchy lines
- Shows detail
- No shading
- thick and thin lines



Take drawings from realistic to  
**ANGULAR** or **CUBIST** style...



# STUDENT EXAMPLES







































# Creating a Cubist Portrait

- Draw a full page contour of frontal view
- Draw a full page contour of profile view
- Draw a full page combination of frontal & profile (can overlap the first 2 drawings to pick the parts you like for the combination drawing.)
- Make the combination view cubist by adding geometric shapes, forms, & straight angles. Add on things in the background that reflect your culture or personality.
- Bring your final drawing to us, and we will give you the watercolor paper.



# Transferring your portrait to the watercolor paper

When transferring your drawing to the watercolor paper, remember:

- 1) Draw lightly
- 2) Draw large to fill the space
- 3) Add personal details (pictures or designs or patterns) to the background if you have leftover space to fill.

Trace over all your pencil lines with crayon or oil pastel.

## Now you are ready to paint!