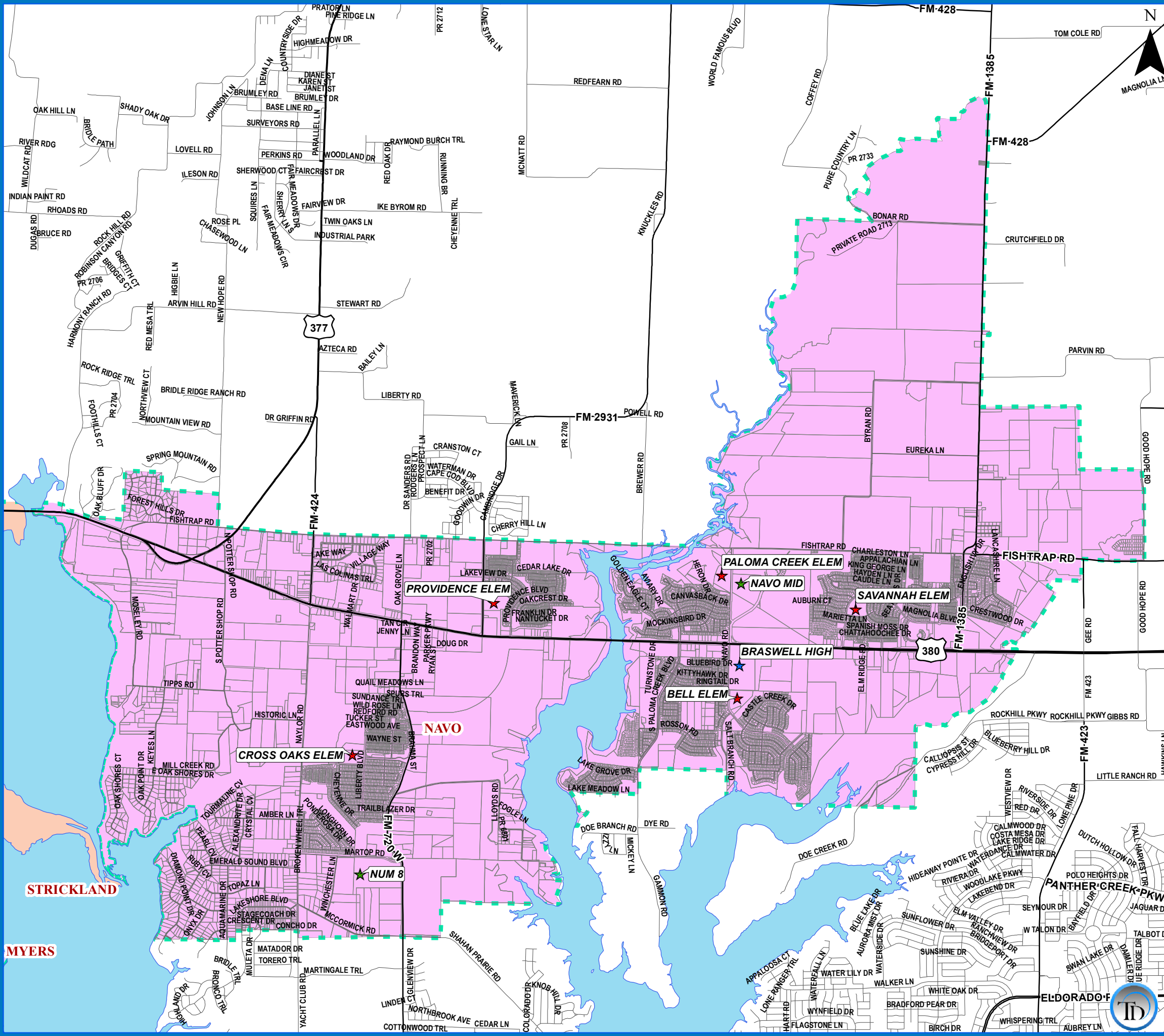


DENTON INDEPENDENT SCHOOL DISTRICT

NAVO MIDDLE SCHOOL ATTENDANCE ZONE 2016-2017



- | | | |
|---------------------|---------------------|------------------------|
| Schools | Roads | Lake Lewisville |
| ★ Elementary School | — Local Roads | ■ Lake Lewisville |
| ★ Middle School | — Major Arterial | □ Parcels |
| ★ High School | — Secondary Highway | |
| ★ Alternative | — Primary Highway | |

Middle Boundaries

■ CALHOUN	709 CONGRESS ST, DENTON, TX 76201	(940)396-2400
■ CROWNOVER	1901 CREEKSIDE DR, CORINTH, TX 76210	(940)369-4700
■ HARPOOL	9601 STACEE LANE, ARGYLE, TX 6226	(940)369-1700
■ MCMATH	1900 JASON DRIVE, DENTON, TX 76205	(940)369-3300
■ MYERS	131 GARZA RD, SHADY SHORES, TX 76208	(940)369-1500
■ NAVO	1701 NAVO RD, AUBREY, TX 76227	(972)347-7500
■ STRICKLAND	324 E WINDSOR DR, DENTON, TX 76209	(940)369-4200

