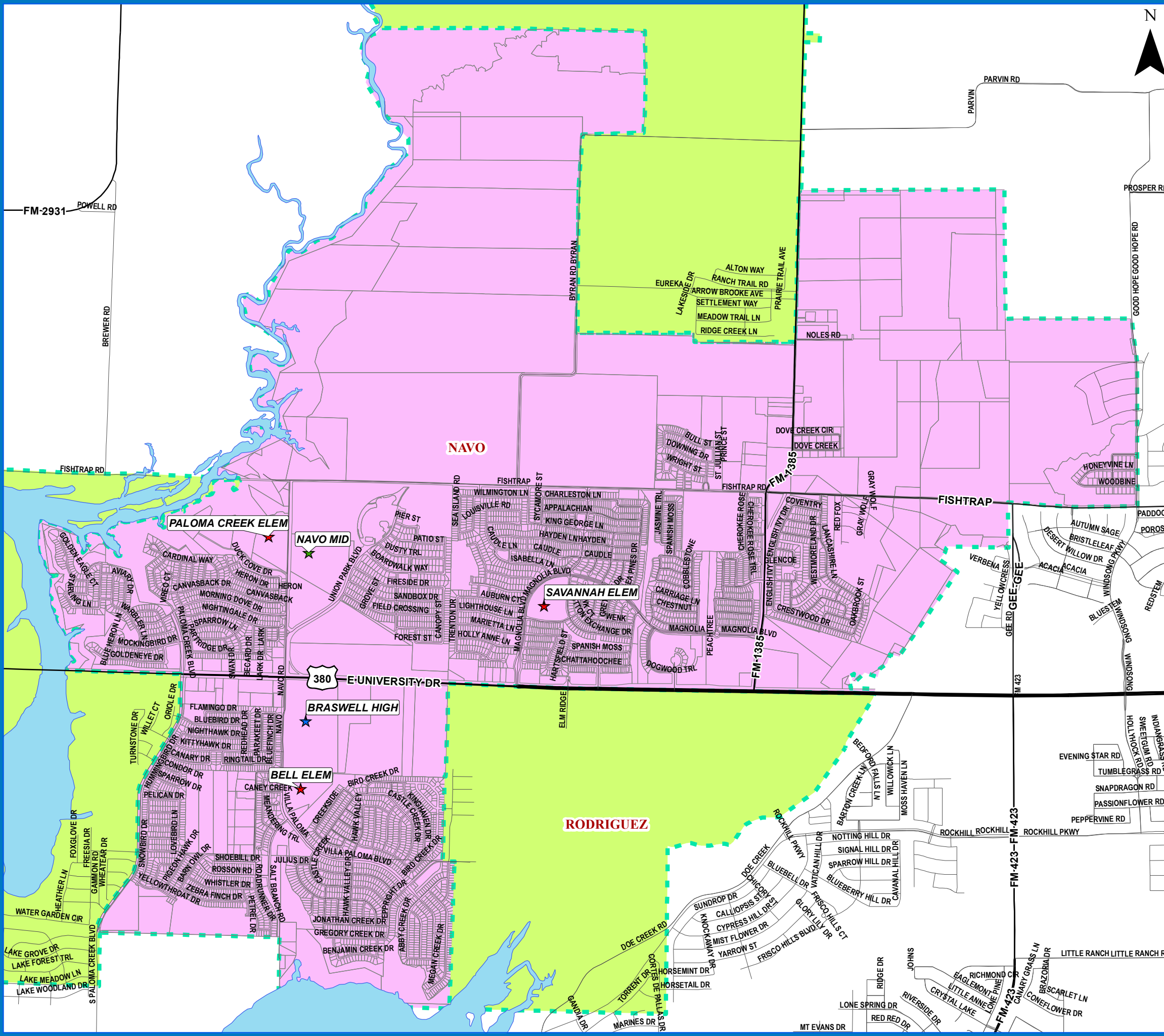


DENTON INDEPENDENT SCHOOL DISTRICT

NAVO MIDDLE SCHOOL ATTENDANCE ZONE 2017-18



- | Schools | Roads | Lake Lewisville |
|---------------------|---------------------|-------------------|
| ★ Elementary School | — Local Roads | ■ Lake Lewisville |
| ★ Middle School | — Major Arterial | □ Parcels |
| ★ High School | — Secondary Highway | |
| ★ Alternative | — Primary Highway | |

Middle Boundaries

	CALHOUN	709 CONGRESS ST, DENTON, TX 76201	(940)369-2400
	CROWNOVER	1901 CREEKSIDE DR, CORINTH, TX 76210	(940)369-4700
	HARPOOL	9601 STACEE LANE, ARGYLE, TX 6226	(940)369-1700
	MCMATH	1900 JASON DRIVE, DENTON, TX 76205	(940)369-3300
	MYERS	131 GARZA RD, SHADY SHORES, TX 76208	(940)369-1500
	NAVO	1701 NAVO RD, AUBREY, TX 76227	(972)347-7500
	RODRIGUEZ		
	STRICKLAND	324 E WINDSOR DR, DENTON, TX 76209	(940)369-4200

