

WATERCOLOR TRIPTYCH

- CREATE A WATERCOLOR TRIPTYCH
- EC. SKETCHBOOK WATERCOLOR





PROJECT GUIDELINES



- Major Project Grade
- Due: April 22nd B-Day & 23rd A-Day
- Paper Size 9" x 12"
- Must be a triptych.
- Must use 3 color schemes.
- Must use 3 watercolor techniques.
- Split paper into 3 sections (ideally 4" x 9")
- Lightly sketch design in pencil before painting



HOW WILL I BE GRADED?

- MAJOR GRADE
 - Used 3 watercolor techniques
 - Used 3 color schemes
 - Paper was divided into 3 sections and my design was lightly sketched in pencil before painting.
 - Creativity of Design
 - Craftsmanship and Neatness
- DAILY GRADE
 - Vocabulary
 - Sketchbook Practice

So What's a TRIPTYCH?



- A triptych is a painting presented in 3 parts or sections.



"Green Triptych" - ink and watercolor on paper - 2" x 8" each



Amy Cain, "*I Don't Remember My Dreams #2, #3, & #4 (triptych)*"

WATERCOLOR TECHNIQUES



- WET ON WET - using wet watery paint on wet paper. Wet the paper with a clean water brush or sponge before you put down paint.
- WET ON DRY - wet paint on dry paper.
- DRY ON DRY - paint with little water on dry paper.



More techniques...

- **DRY ON WET** - dry brush with little water on wet paper.
- **LIFTING OFF** - applying wet paint to dry paint and blotting with a paper towel to lift off paint.
- **DROPPING IN COLOR** - adding color to a wet area; let it blend/bleed & spread
- We will do a DEMO after the presentation.

Examples ...



Wet on Wet



Dry on Dry



Lifting off



Wet on Dry



Dry on Wet



Dropping in color



INTERESTING FACT



Did you know watercolor is spelled 2 ways?

WATERCOLOR- American

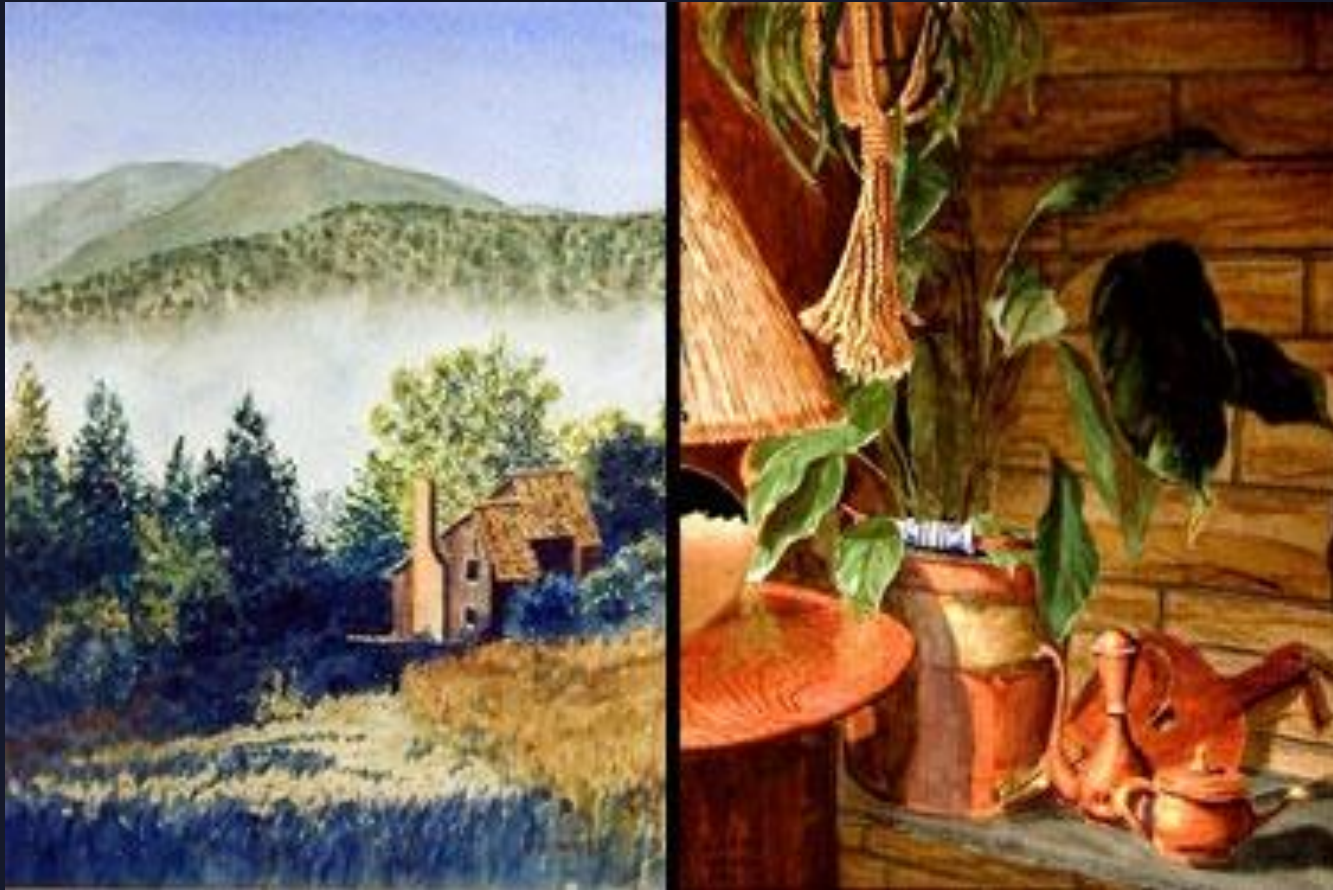
WATERCOLOUR- British

COLOR SCHEMES



- Warm Colors
- Cool Colors
- Complimentary Colors
- Fade or Blend
- Value Gradation
- Monochromatic
- Triadic Colors
- Analogous Colors

COOL AND WARM COLORS



- COOL: blue, green and purple
- WARM: red, orange and yellow

COMPLIMENTARY COLORS

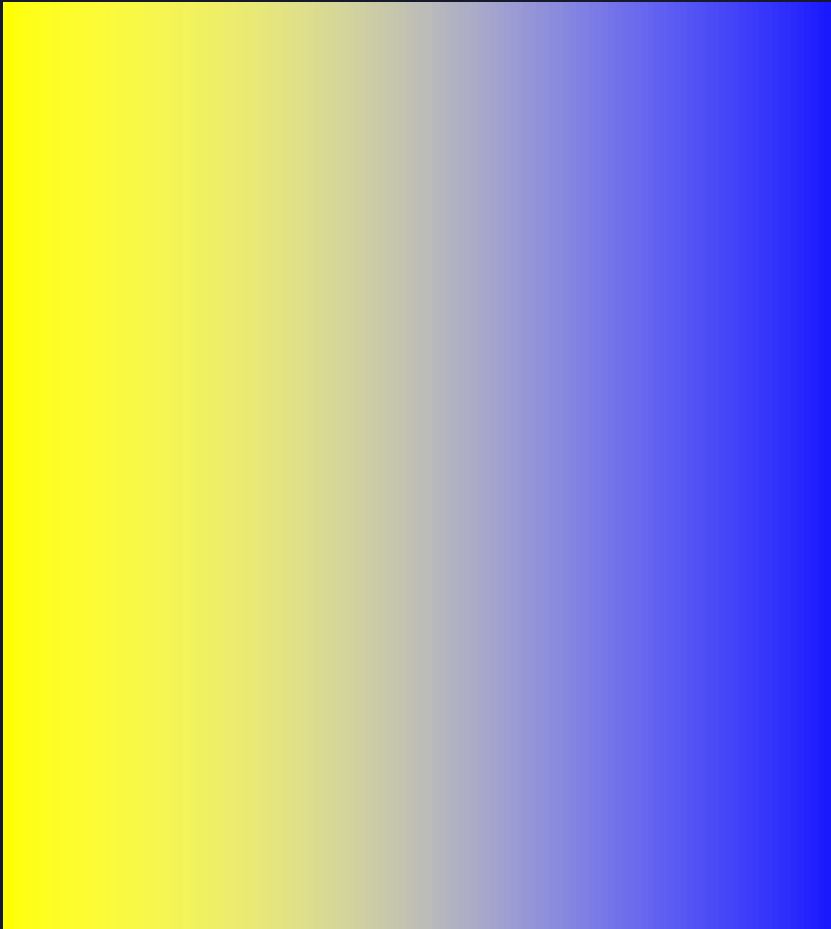
Colors that are opposite on the color wheel.

Red & Green. Blue & Orange. Yellow & Purple.



FADE OR BLEND - Technique

Painting 2 colors next to one another and letting them
blend together.



VALUE GRADATION

Using black or another color to make a color darker, or using more water to make a color lighter.



TRIADIC COLORS

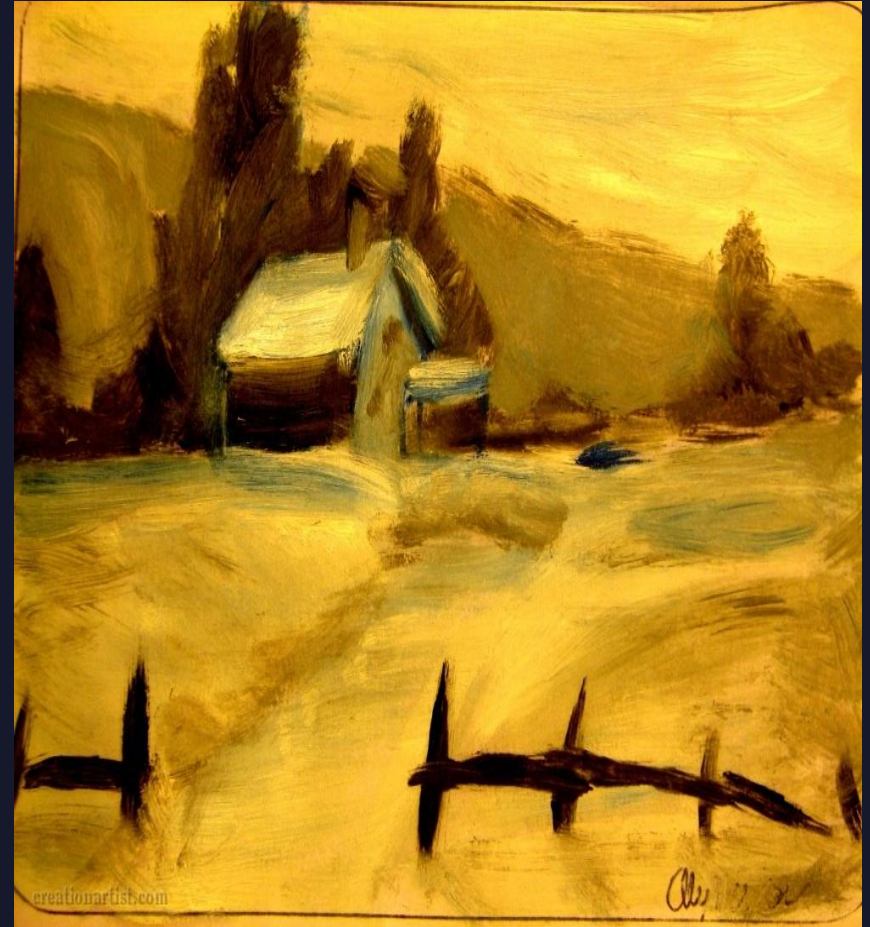
Using 3 colors equally spaced around the color wheel.
Red, Yellow & Blue. Orange, Green & Purple.



<http://fineartamerica.com/images-medium/red-yellow-blue-rachel-holland.jpg>

MONOCHROMATIC

A single color with tints and shades.



ANALAGOUS COLORS

Colors that are side by side on the color wheel.

- Similar to monochromatic





Warm colors



Cool colors



Complimentary colors



FADE



BLEND





Value Gradation

+ Black

Red

+ water



Triadic Colors

orange, green, purple



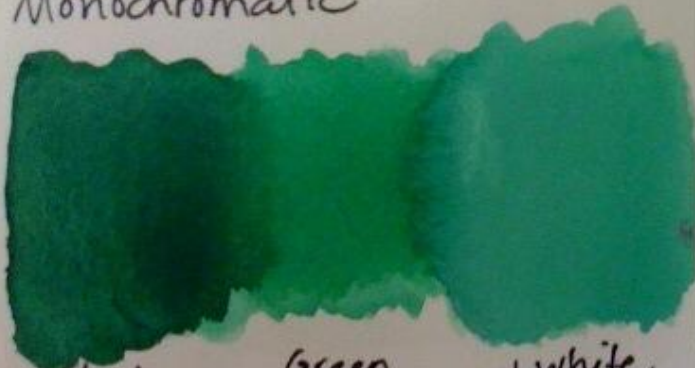
red
yellow
blue

Monochromatic

+ Black

Green

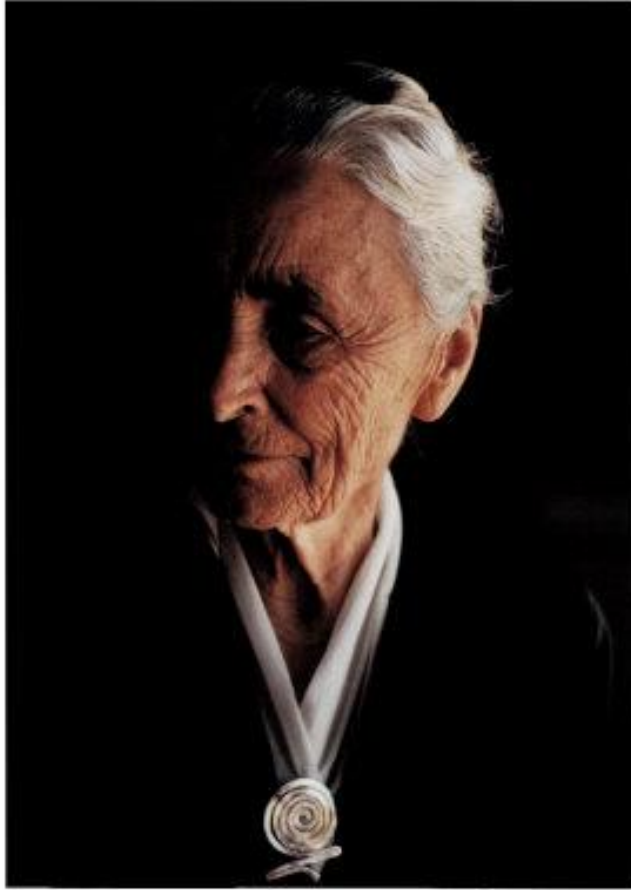
+ white



Analagous Colors



Georgia O'Keeffe



Georgia O'Keeffe was a famous artist who focused on nature.
She transformed nature into abstraction.

Georgia O'Keeffe

- Naturalistic
- Abstract
- Organic Shapes
- Warm Colors
- Cool Colors
- Mood



Yellow Orchid
Georgia O'Keeffe



“She portrayed the world simply as she saw it and her vision had many unusual perspectives. Flowers were her favorite subjects and she would sometimes paint flowers very close-up or very far away, or sometimes she would only show us a part of her subject on the canvas. She gave us this new perspective because she wanted to make us look at the beauty of flowers in a new way.”

Let's Meet Famous Artists: Georgia O'Keeffe.

These paintings are apart of a series that represent O'Keeffe's thoughts and emotions.



How might these paintings convey emotion?

GEORGIA O'KEEFFE

Series I: No. 1, No. 3 and No. 4

What is this color scheme?



Oriental Poppies, 1927. by G. O'Keeffe

desktop work by artwallpapers.com

Georgia O'Keeffe Paintings Oriental
Poppies, 1927

What is the color scheme?

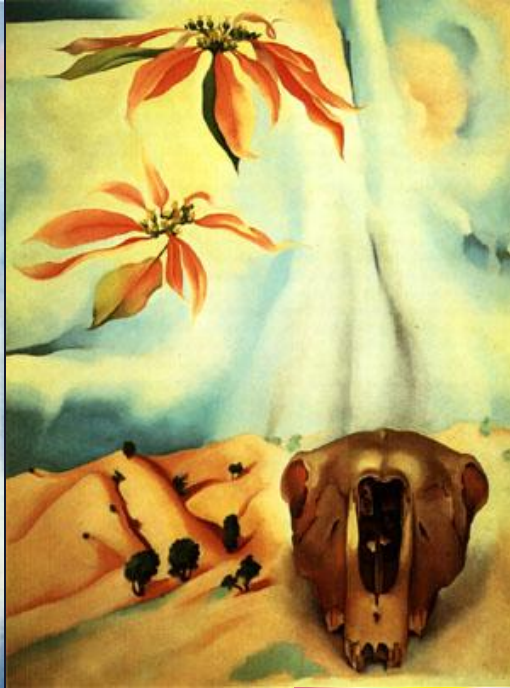


Georgia O'Keeffe Paintings Black and
Purple Petunias

What elements make this painting naturalistic or abstract? Why?



Cottonwood III, 1944



“Nobody sees a flower really; it is so small.
We haven't time, and to see takes time ...
like to have a friend takes time.”



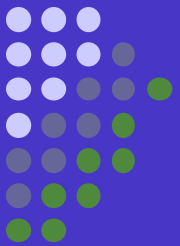
Georgia O'Keeffe



Georgia O'Keeffe Paintings White Trumpet Flower

What does O'Keeffe mean by this quote?

SKETCHBOOK PRACTICE



- 2 Sketch Book Pages
- 1st Page
 - Separate into 6 sections.
 - Choose 6 watercolor Techniques to practice.
- 2nd Page
 - Separate into 6 sections
 - Choose 6 color schemes to practice.

Wet on wet	Wet on dry
Dry on dry	Dry on wet
Lifting off	Dropping in color



PAINTING TIPS!

- Always put your name.
- LIGHTLY SKETCH design in pencil first.
- PAINT IN LAYERS
 - 1ST Paint bottom layers
 - 2nd Paint middle layers
 - 3rd Paint details/textures
- BRUSHES
 - BIG for large spaces
 - MEDIUM for medium spaces
 - SMALL for details

ROYAL[®]
& LANGNICKEL

Mr. Brush[™] says



Try to keep the
paint in my hair!



Don't chew
my handle!



I like to be rinsed
in clean water!



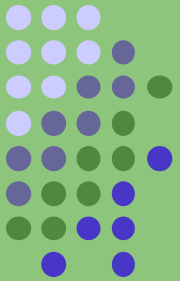
You shouldn't store
me upside down!



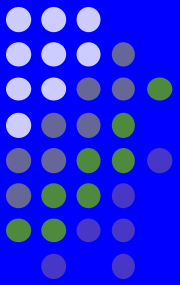
Please don't
smash my hair!



If you take care of
me, I'll be ready to
paint another day!



NOW...



- Go to back for DEMO
- Start your sketchbook assignment.
- I will come around to check vocabulary.
- Start thinking about designs for watercolor triptych.

SOURCES



- "Green Triptych" - ink and watercolor on paper - 2" x 8" each
- Amy Cain, "***I Don't Remember My Dreams #2, #3, & #4 (triptych)***"
- captainwatercolor.com
- <http://caroljessen.blogspot.com/2009/11/exercise-in-gradation.html>
- <http://fineartamerica.com/images-medium/red-yellow-blue-rachel-holland.jpg>
- www.creationartist.com/2008/11/color-schemes/
- painting.about.com/.../ppfruit-MSutton.htm