

Ginnings Parent Newsletter

December 2nd, 2024

Para Español por favor oprima el botón de traducir

Dear parents and families,

Welcome to the month of December!

I am excited to have the opportunity to be collaborating alongside our Ginnings staff, families, and students during this transitional times.

If you have not heard yet, Ginnings will get a rebuild during the summer of 2025. I have included important timelines, information, and dates to help you stay up to speed with the changes.

I am grateful for the support we have been receiving from our district leaders, the superintendent, Dr. O'Bara, and our are superintendent, Mrs. Schulz.

We are on this together and we will strive!

Thank you for allowing me to lead this movement!

Grateful,

-Mrs. Velásquez

Upcoming Events

- **December 3** - Community Community Meeting About Relocation @ 6:30 -7:30 PM Ginnings School Cafeteria
- **December 5** -2nd Grade Musical @ 6:00 PM School Cafeteria
- **December 9-13** -Kids Holiday Shop in the science lab from PTA/TBD
- **December 9** -Trophy presentation for the Art and Essay Contest/4th and 5th Grade @ 9:00 AM in the cafeteria
- **December 12** -Winter Choir Concert @ 6:00 PM
- **December 19** -Classroom parties Pre-K, Kinder, 1st, 2nd, 3rd, and 5th Grade
- **December 20** -Classroom parties for 4th Grade/Grading period ends for the 2nd Nine Weeks
- **December 19 -20** Early release
- **December 23** -January 6 Winter break for students
- **January 6** -Professional Development for Staff
- **January 7** - Grading period begins

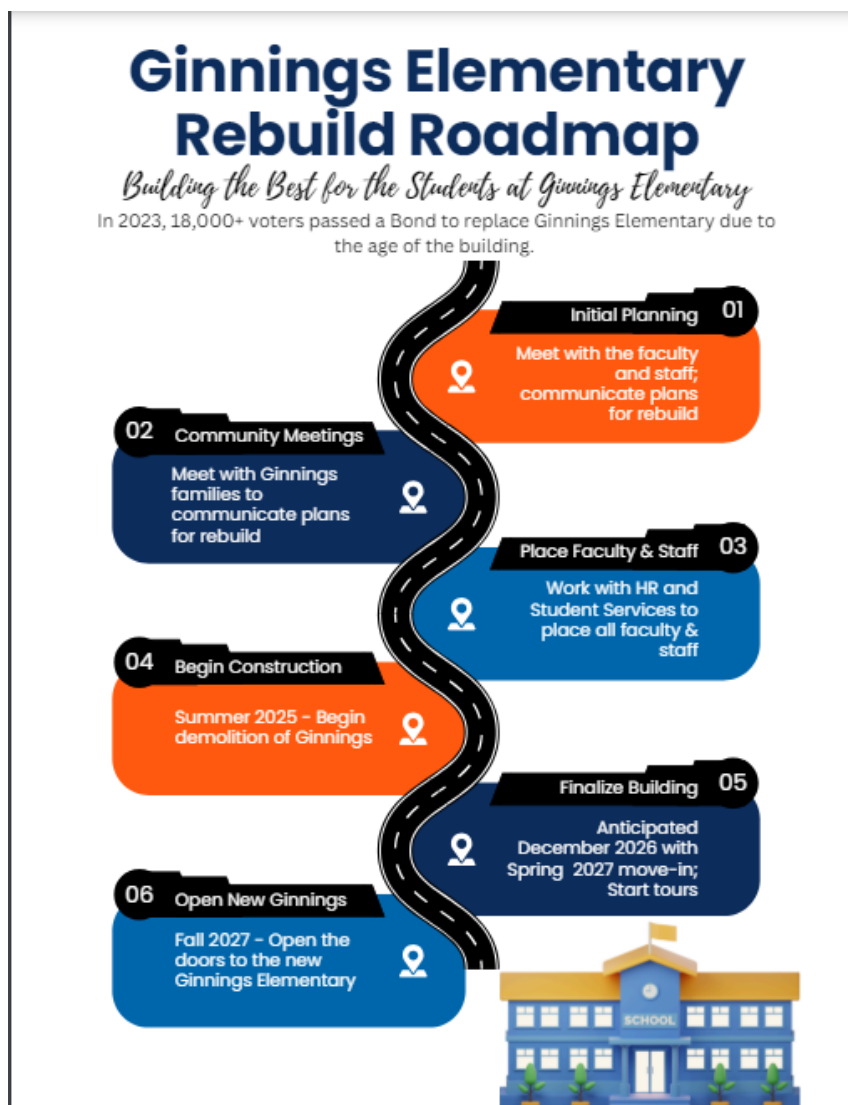
Ginnings Elementary has been selected to have the Community Eligibility Program

We need your assistance with this process

Community Eligibility Program (CEP) Please take action!

Ginnings Elementary Temporary Closing for Two Years to Rebuild Campus

Ginnings Elementary Rebuild Roadmaps PDF Access



Let's have some fun during December!



School Cafe Menus

12/2/24, 5:21 AM

SchoolCafé - School Menus

GINNINGS ELEMENTARY
Breakfast (ES Breakfast-Bagged), December - 2024

2 Monday						3 Tuesday						4 Wednesday						5 Thursday						6 Friday					
Cals	TotFat (g)	SatFat (g)	Carbs (g)	Sod. (mg)		Cals	TotFat (g)	SatFat (g)	Carbs (g)	Sod. (mg)		Cals	TotFat (g)	SatFat (g)	Carbs (g)	Sod. (mg)		Cals	TotFat (g)	SatFat (g)	Carbs (g)	Sod. (mg)		Cals	TotFat (g)	SatFat (g)	Carbs (g)	Sod. (mg)	
GRAINS Low Sugar Cinnamon Toast Crunch Cereal Bowl						GRAINS DE Breakfast Sandwich, Egg and Turkey Sausage GRAINS Trix French Toast						GRAINS Low Sugar Cinnamon Toast Crunch Cereal Bowl Pull a part Donuts						GRAINS Blueberry Muffin Chocolate Chocolate Chip Muffin						GRAINS Mini Caramel Cinnis					
233	5.06	1.01	44.55	324		280	10	2	31	430		233	5.06	1.01	44.55	324		380	12	4	61	270		210	6	1	35	280	
						220	7	1	36	190		240	11	4.5	31	300		390	12	4	63	260							
9 Monday						10 Tuesday						11 Wednesday						12 Thursday						13 Friday					
Cals	TotFat (g)	SatFat (g)	Carbs (g)	Sod. (mg)		Cals	TotFat (g)	SatFat (g)	Carbs (g)	Sod. (mg)		Cals	TotFat (g)	SatFat (g)	Carbs (g)	Sod. (mg)		Cals	TotFat (g)	SatFat (g)	Carbs (g)	Sod. (mg)		Cals	TotFat (g)	SatFat (g)	Carbs (g)	Sod. (mg)	
GRAINS Low Sugar Cocoa Puffs, 2 Ounce Bowl						GRAINS Banana Chocolate Chip Oatmeal Round Cereal, Cocoa Puffs Cups 60/2oz						GRAINS Cereal, Cocoa Puffs Cups 60/2oz Mini Confetti Pancakes						MEAT/MEAT ALT Blonde Chocolate Chip Muffin with Cherry Trix Yogurt Blueberry Muffin 2oz with Sausage						GRAINS Cereal, Cocoa Puffs Cups 60/2oz Mini Maple Flavored Waffles					
210	3	0	47	220		280	12	4	39	240		425	6.08	1.01	44.55	324		280	7.5	2	47	190		425	6.08	1.01	44.55	324	
						425	6.08	1.01	44.55	324		220	7	1	36	300		290	13	4	29	300		210	6	1	37	170	
16 Monday						17 Tuesday						18 Wednesday						19 Thursday						20 Friday					
23 Monday						24 Tuesday						25 Wednesday						26 Thursday						27 Friday					
30 Monday						31 Tuesday																							

This institution is an equal opportunity provider.

For Changes in Dismissal Please Access this Link

Early Release Extended School Day -Forms need to be submitted by December 13th!

Dear Families,

Denton ISD will provide engagement for students on the upcoming TWO early release days, **December 19th and 20th, 2024**, from 12:00 pm until 3:00 pm for elementary children. The Extended School Day program will coordinate with each campus to provide engaging activities for students while teachers are participating in Professional Learning Communities. In addition, Denton ISD transportation will be provided at both the early release time (12:00pm) and the regular release time (3:00 pm) for all eligible elementary bus students. If you indicate on the form that your child will ride the bus, please notify the ESD office 24 hours prior to the Early Release Day if there has been a change in pick up plan.

Parents must sign up each month to participate. If your student currently attends ESD, you do not need to sign up.

If you have any questions regarding this, please contact the Extended School Day office at 940-369-0080.

Participation in this opportunity will require completion of the form below. **All forms must be submitted no later than midnight on Friday, December 13th, 2024 to participate.**

English

<https://forms.gle/sZV6MQaeDQQ7WzzP6>

Estimadas Familias:

El Distrito Escolar Independiente de Denton brindará actividades escolares para estudiantes las día de salida temprano, **19 y 20 de diciembre de 2024 de las 12:00pm hasta las 3:00pm para niños de primaria**. El programa Día Escolar Extendido se coordinará con cada campus para brindar actividades escolares para estudiantes mientras los maestros están participando en grupos de aprendizaje profesional. Además, se proporcionará transporte de Denton ISD tanto a la hora de salida temprano (12:00pm) y a la hora de salida regular (3:00pm) para todos los estudiantes de primaria elegibles para utilizar el autobús. Si indica en el formulario que su hijo viajará en el autobús, notifique a la oficina de ESD 24 horas antes del día de salida temprana si ha habido un cambio en el plan de recogida.

Los padres deben inscribirse cada mes para participar. Si su estudiante atiende actualmente ESD (Día Escolar Extendido, por sus siglas en Inglés), no necesita registrarse.

Si tiene alguna pregunta, favor de comunicarse con la oficina de Día Escolar Extendido al 940-369-0080.

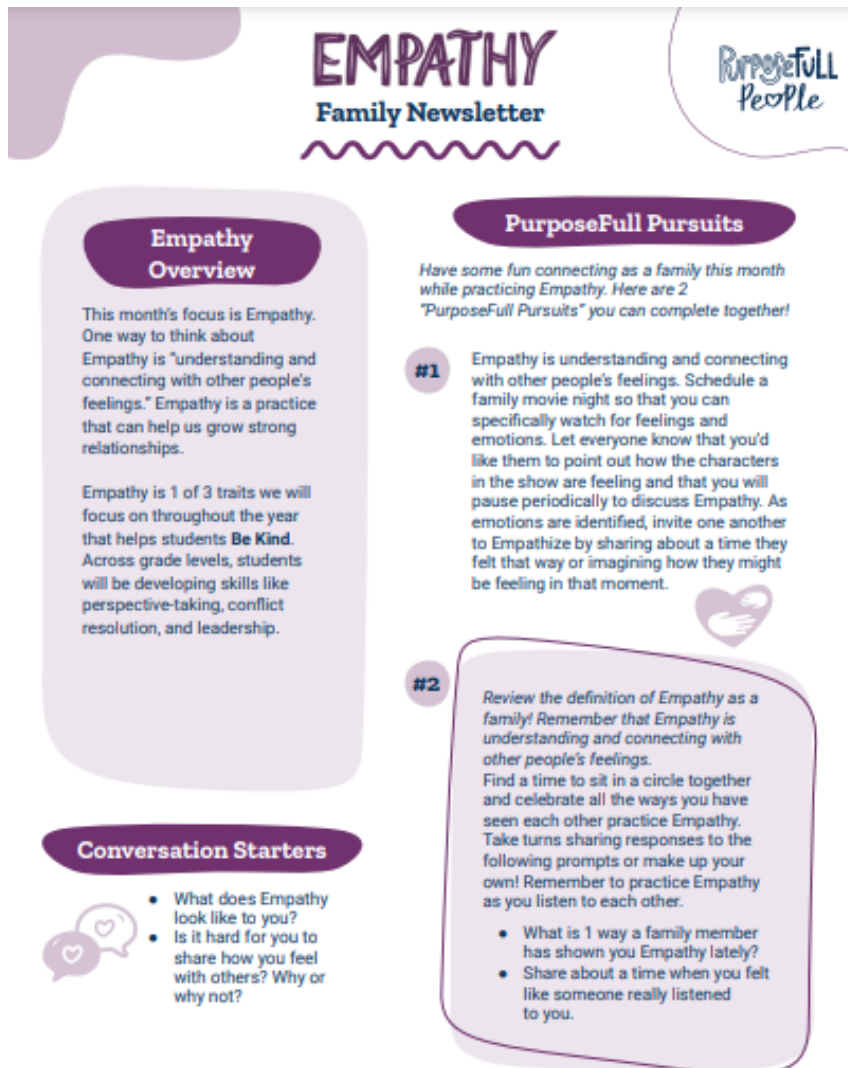
Para participar en esta oportunidad, requerirá completar el siguiente formulario. **Todos los formularios deben ser enviados a más tardar el día 13 de diciembre de 2024 para participar.**

español

<https://forms.gle/PLgHEUjAC6siJr739>

Volunteer and Mentor Program Information

Empathy-Character Strong Family Newsletter



Pre-K Wearing Jingle Bells 😊



***One of our sister schools, Stephens Elementary,
bringing yummy snacks to cheer us up!***



Marlen Velasquez

Marlen is using Smore to create beautiful newsletters