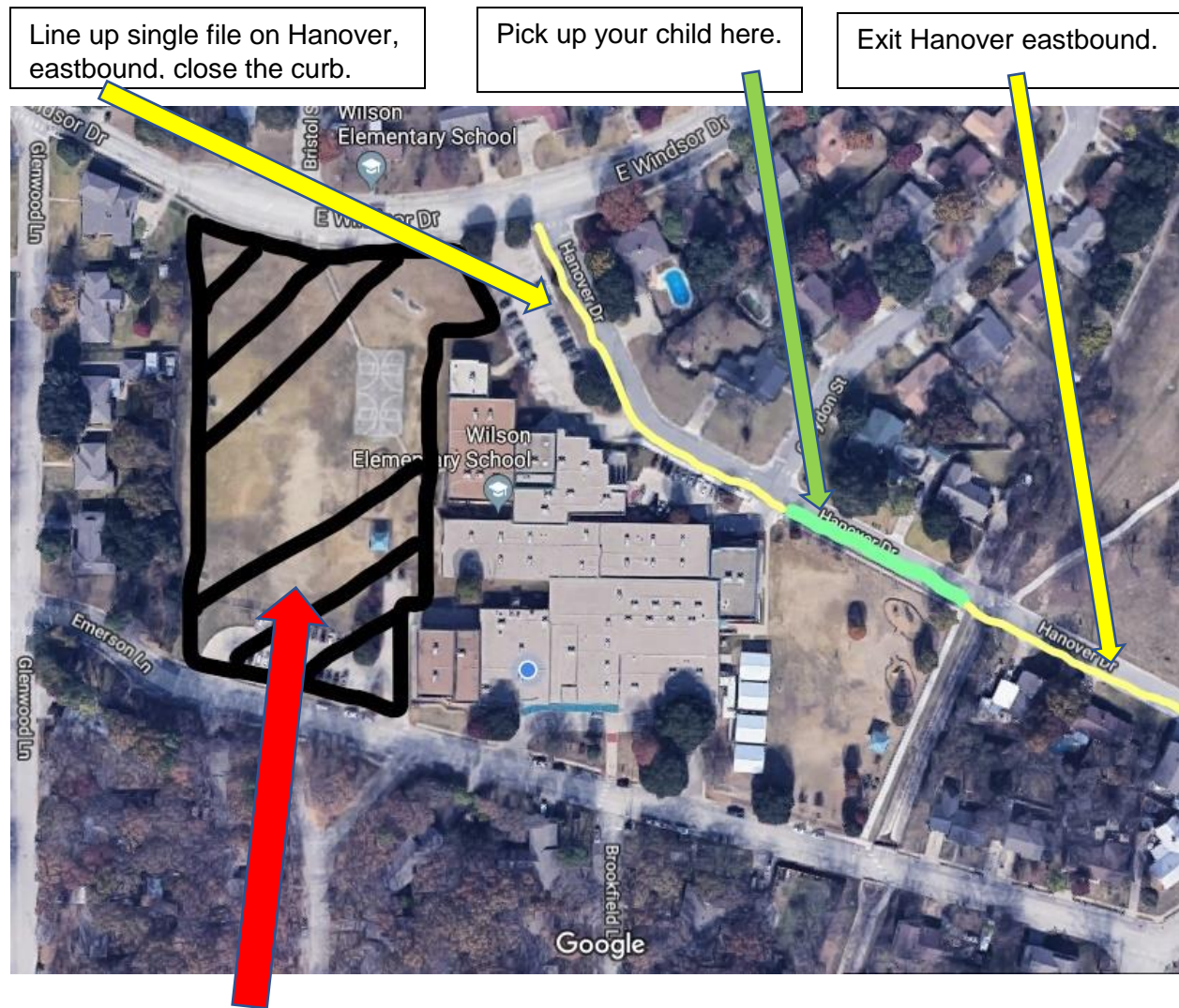


1st and 2nd Grade
Woodrow Wilson Arrival and Pick-up Procedures for 2019-2020

Arrival- Students may be dropped off by the doors in the bus lane on Emerson between 7:10-7:40 AM. At 7:40 AM, the doors are locked and students must enter through the Front Entrance. If you would like to walk your child to their classroom, you must enter through the Front Entrance and sign in before being granted access to the rest of the building.

Pick-Up-1st and 2nd grade students, that are picked up by their guardian, are picked up on Hanover Drive. If they have an older sibling, the older sibling will walk to this pick up location and join their younger sibling.

Please see the image below with more detailed explanation for pick up procedures.



Please note that the West side of the property is completely Off Limits - Construction Site