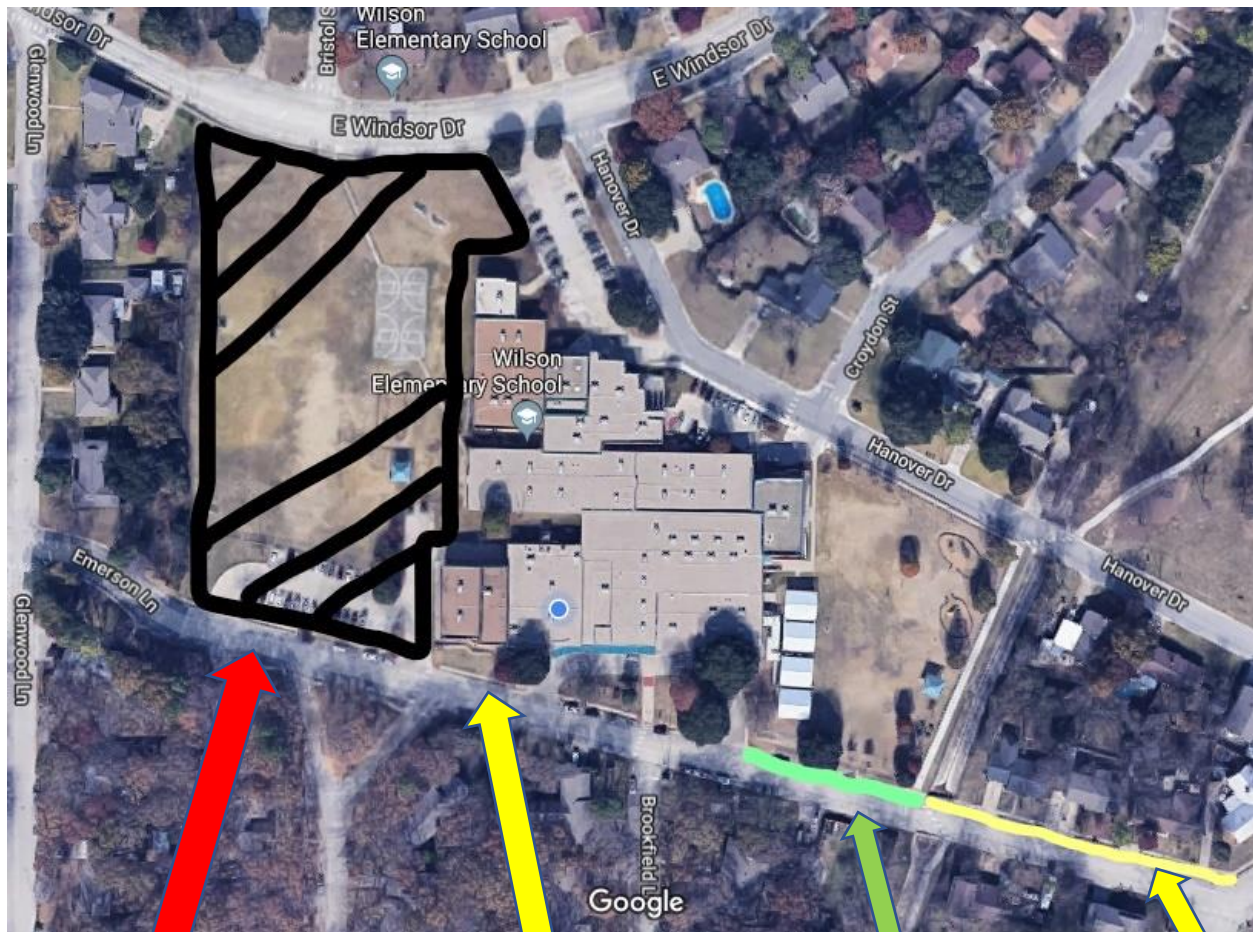


## Kindergarten Woodrow Wilson Arrival and Pick-up procedures for 2019-2020

**Arrival-** Students may be dropped off by the doors in the bus lane on Emerson between 7:10-7:40 AM. At 7:40 AM the doors are locked and students must enter through the front entrance. If you would like to walk your child to their classroom, you must enter through the Front Entrance and sign in before being granted access to the rest of the building.

**Pick-Up-** Kindergarten students that are picked up by their guardian are picked up along the fence line on Emerson, west of the school. If they have an older sibling, the older sibling will walk to this location and be picked up with their kinder sibling.

Please see the image below with more detailed explanation for pick up procedures.



West side of the property is completely Off Limits- Construction Site

3. Exit westbound on Emerson

2. Pick up your child here. They will be by the fence. Do not leave your car unattended.

1. Line up on Emerson Lane, westbound