

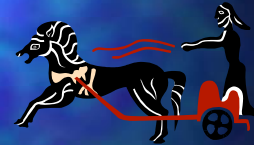
MEDICAL TERMINOLOGY



The Language of the Health Profession

ORIGIN OF MEDICAL TERMS

- Hippocrates was a Greek physician and is known as the "father of medicine."
- 75% of medical terms are based on either Greek or Latin words.



ROOT WORDS

- A root is the foundation or basic meaning of a word.
- May appear with a prefix or suffix, or between a prefix or suffix.



- cardi - root for heart
- hepat- root for liver
- neur - root for nerve
- nephr - root for kidney
- cyt- root for cell

PREFIX

- Pre - prefix means before
- peri- prefix means around
- hemi - prefix means half
- micro - prefix means large
- neo- prefix means new

- The prefix is a part of the word that precedes the word root and changes its meaning.
- Often indicates location, time, or number.

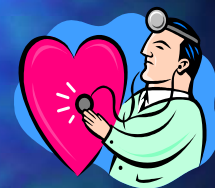
SUFFIX



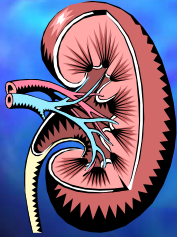
- A suffix is the word ending that follows the word root and changes its meaning.
- Often indicates the procedure, condition, disorder, or disease.
- -itis - suffix means inflammation
- -ology - suffix means the study of
- - ectomy- suffix means surgical removal-plast- suffix means surgical repair

Cardiology

- Cardi - root means heart.
- -ology - suffix means the study of.
- Cardiology - the study of the heart.



Nephritis



- Nephro - root word means kidney
- -itis suffix means inflammation
- Nephritis means inflammation of the kidney

Break down and define the following medical terms.

- pericarditis
- leukocyte
- hepatitis
- neuroplasty

pericarditis

Pericarditis

Peri- means around	-cardi- means the heart	-itis means inflammation
-----------------------	----------------------------	-----------------------------



leukocyte



- leuko- prefix means white
- cyte - root word means cell
- leukocyte means white cell

hepatitis

- hepat - root word means liver
- -itis - suffix means inflammation
- hepatitis - means inflammation of the liver



neuroplasty



- neuro - root word means nerve or nerves
- -plasty - suffix means surgical repair
- neuroplasty means surgical repair of the nerve

Combining Forms

- Combining form consists of the word root and a connecting vowel to make it easier to pronounce and attach another root word or suffix.
- Combining form for heart is cardi
- Combining form associated with cells is cyt

Basic Rules for the Combining Vowel

- The combining vowel is not used when the suffix begins with a vowel.
(neuritis)
- The combining vowel is used when the suffix begins with a consonant.
(neuroplasty)

THE END

