

DENTON INDEPENDENT SCHOOL DISTRICT

CALHOUN MIDDLE SCHOOL ATTENDANCE ZONE

Schools

- ★ Elementary School
- ★ Middle School
- ★ High School
- ★ Alternative

Roads

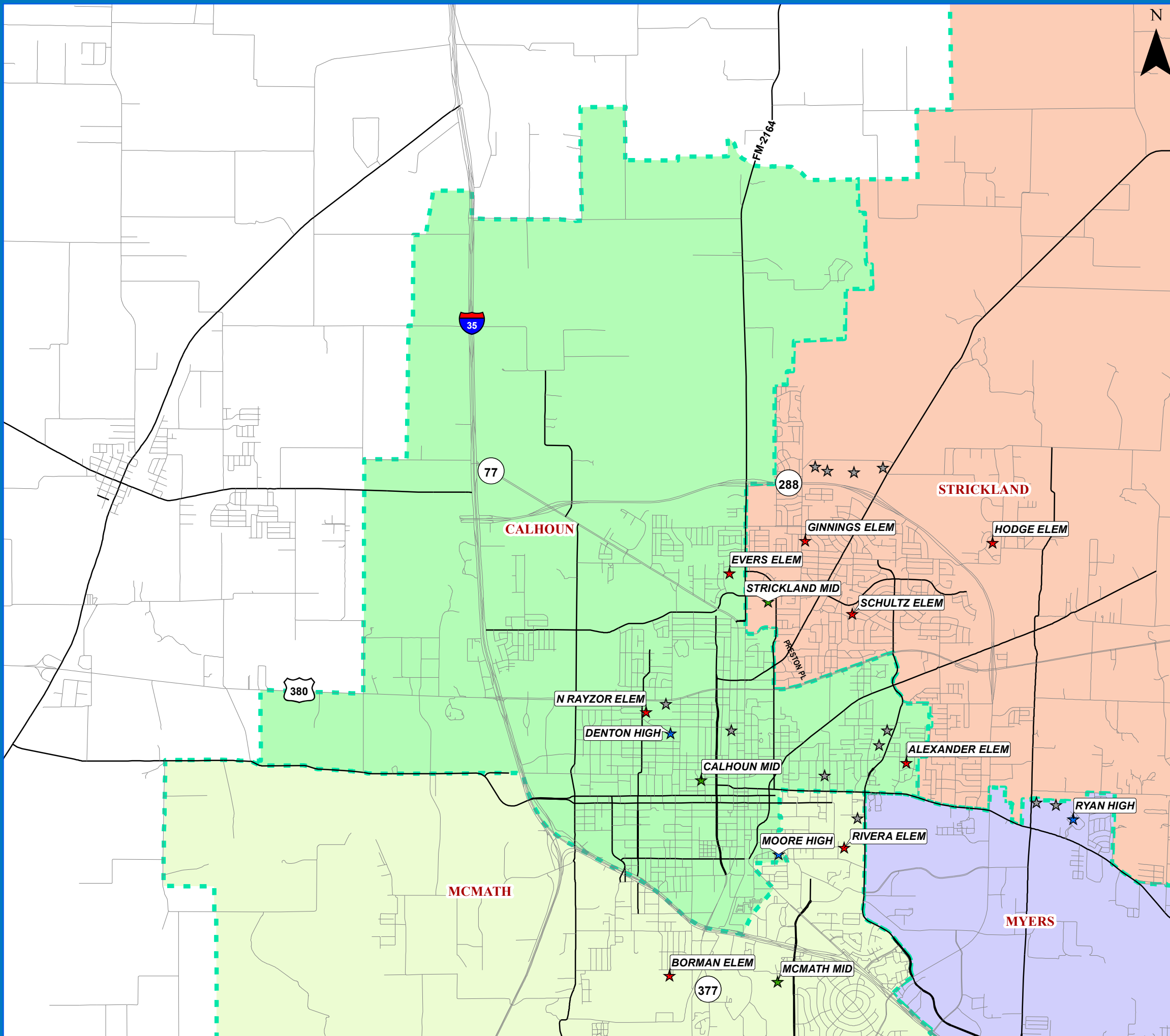
- Local Roads
- Major Arterial
- Secondary Highway
- Primary Highway

Lake Lewisville

- Lake Lewisville

Middle Boundaries

CALHOUN	709 CONGRESS ST, DENTON, TX 76201	(940)369-2400
CROWNOVER	1901 CREEKSIDE DR, CORINTH, TX 76210	(940)369-4700
HARPOOL	9601 STACEE LANE, LANTANA, TX 6226	(940)369-1700
MCMATH	1900 JASON DRIVE, DENTON, TX 76205	(940)369-3300
MYERS	131 GARZA RD, SHADY SHORES, TX 76208	(940)369-1500
NAVO	1701 NAVO RD, AUBREY, TX 76227	(972)347-7500
RODRIGUEZ	8650 MARTOP ROAD, OAK POINT, TX 76227	(972)347-7050
STRICKLAND	3003 N BELL AVE, DENTON, TX 76209	(940)369-4200



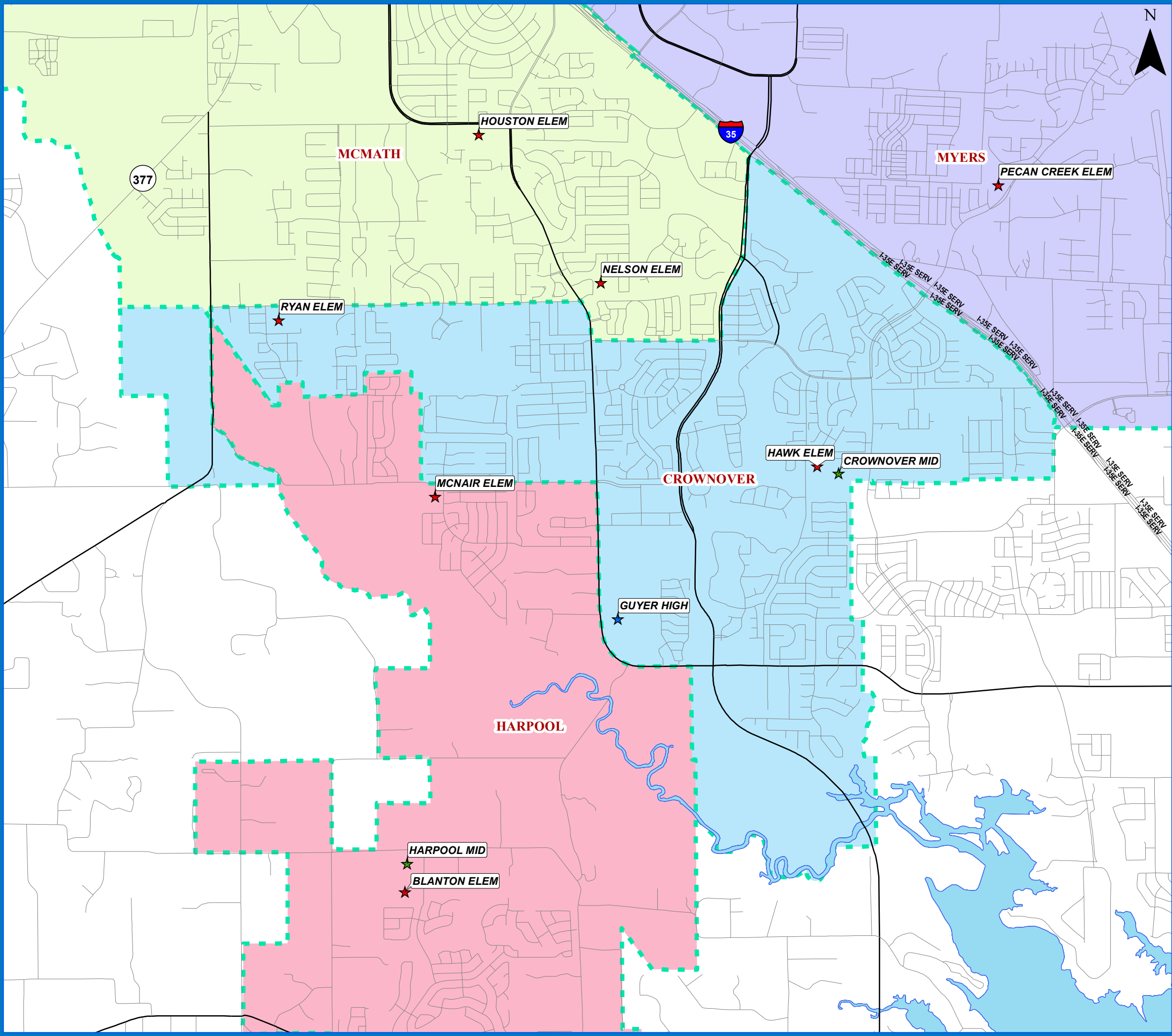
Last Modified: July 2021



tdemographics.com

DENTON INDEPENDENT SCHOOL DISTRICT

CROWNOVER MIDDLE SCHOOL ATTENDANCE ZONE



- Schools**
- ★ Elementary School
 - ★ Middle School
 - ★ High School
 - ★ Alternative
- Roads**
- Local Roads
 - Major Arterial
 - Secondary Highway
 - Primary Highway
- Lake Lewisville**
- Lake Lewisville

Middle Boundaries

CALHOUN	709 CONGRESS ST, DENTON, TX 76201	(940)369-2400
CROWNOVER	1901 CREEKSIDE DR, CORINTH, TX 76210	(940)369-4700
HARPOOL	9601 STACEE LANE, LANTANA, TX 6226	(940)369-1700
MCMATH	1900 JASON DRIVE, DENTON, TX 76205	(940)369-3300
MYERS	131 GARZA RD, SHADY SHORES, TX 76208	(940)369-1500
NAVO	1701 NAVO RD, AUBREY, TX 76227	(972)347-7500
RODRIGUEZ	8650 MARTOP ROAD, OAK POINT, TX 76227	(972)347-7050
STRICKLAND	3003 N BELL AVE, DENTON, TX 76209	(940)369-4200

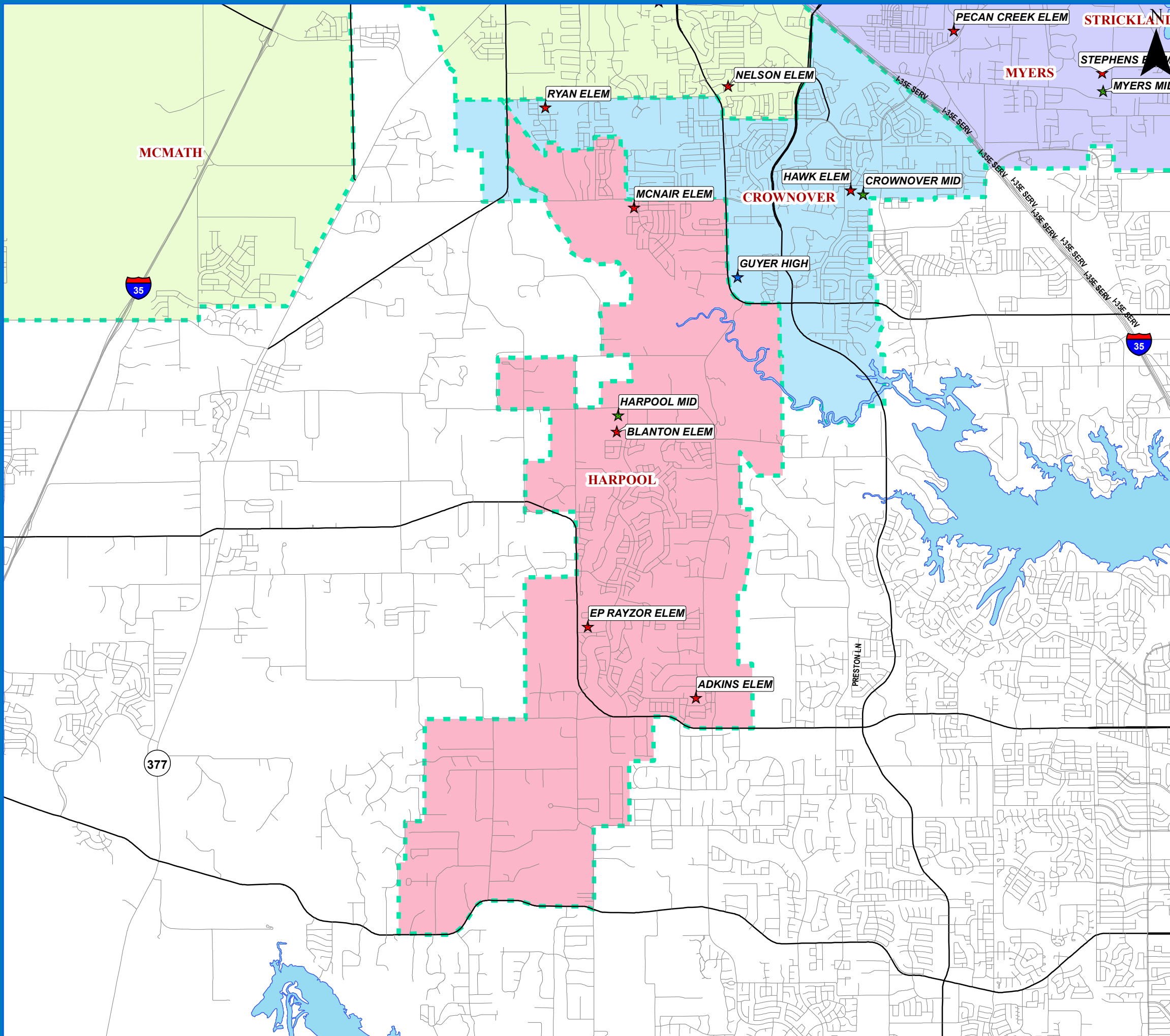


Last Modified: July 2021



DENTON INDEPENDENT SCHOOL DISTRICT

HARPOOL MIDDLE SCHOOL ATTENDANCE ZONE



- Schools**
- ★ Elementary School
 - ★ Middle School
 - ★ High School
 - ★ Alternative
- Roads**
- Local Roads
 - Major Arterial
 - Secondary Highway
 - Primary Highway
- Lake Lewisville**
- Lake Lewisville

Middle Boundaries

CALHOUN	709 CONGRESS ST, DENTON, TX 76201	(940)369-2400
CROWNOVER	1901 CREEKSIDE DR, CORINTH, TX 76210	(940)369-4700
HARPOOL	9601 STACEE LANE, LANTANA, TX 6226	(940)369-1700
MCMATH	1900 JASON DRIVE, DENTON, TX 76205	(940)369-3300
MYERS	131 GARZA RD, SHADY SHORES, TX 76208	(940)369-1500
NAVO	1701 NAVO RD, AUBREY, TX 76227	(972)347-7500
RODRIGUEZ	8650 MARTOP ROAD, OAK POINT, TX 76227	(972)347-7050
STRICKLAND	3003 N BELL AVE, DENTON, TX 76209	(940)369-4200



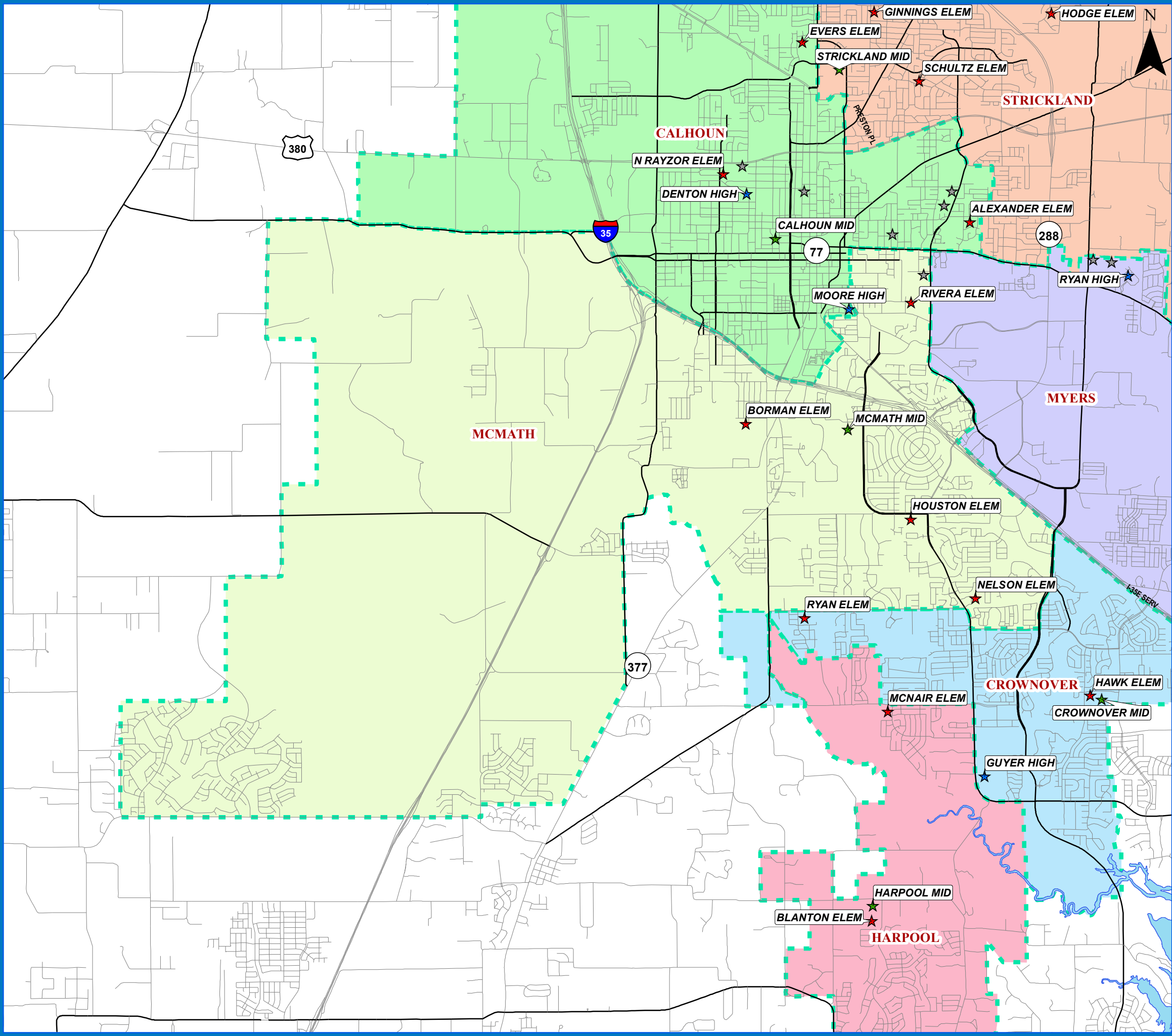
Last Modified: July 2021



tdemographics.com

DENTON INDEPENDENT SCHOOL DISTRICT

MCMATH MIDDLE SCHOOL ATTENDANCE ZONE



- Schools**
- ★ Elementary School
 - ★ Middle School
 - ★ High School
 - ★ Alternative
- Roads**
- Local Roads
 - Major Arterial
 - Secondary Highway
 - Primary Highway
- Lake Lewisville**
- Lake Lewisville

Middle Boundaries

CALHOUN	709 CONGRESS ST, DENTON, TX 76201	(940)369-2400
CROWNOVER	1901 CREEKSIDE DR, CORINTH, TX 76210	(940)369-4700
HARPOOL	9601 STACEE LANE, LANTANA, TX 6226	(940)369-1700
MCMATH	1900 JASON DRIVE, DENTON, TX 76205	(940)369-3300
MYERS	131 GARZA RD, SHADY SHORES, TX 76208	(940)369-1500
NAVO	1701 NAVO RD, AUBREY, TX 76227	(972)347-7500
RODRIGUEZ	8650 MARTOP ROAD, OAK POINT, TX 76227	(972)347-7050
STRICKLAND	3003 N BELL AVE, DENTON, TX 76209	(940)369-4200

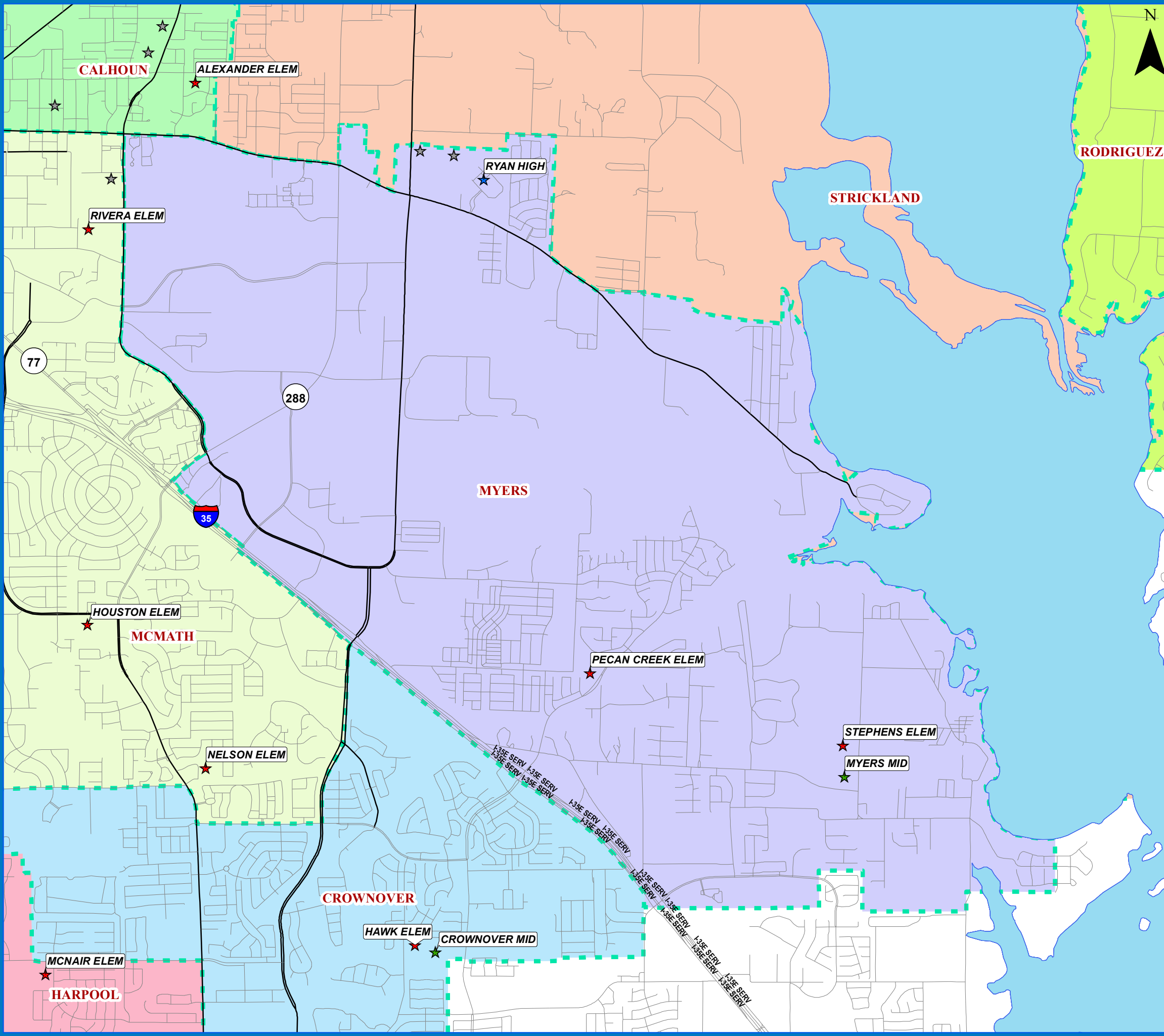


Last Modified: July 2021



DENTON INDEPENDENT SCHOOL DISTRICT

MYERS MIDDLE SCHOOL ATTENDANCE ZONE



- Schools**
- ★ Elementary School
 - ★ Middle School
 - ★ High School
 - ★ Alternative
- Roads**
- Local Roads
 - Major Arterial
 - Secondary Highway
 - Primary Highway
- Lake Lewisville**
- Lake Lewisville

Middle Boundaries

CALHOUN	709 CONGRESS ST, DENTON, TX 76201	(940)369-2400
CROWNOVER	1901 CREEKSIDE DR, CORINTH, TX 76210	(940)369-4700
HARPOOL	9601 STACEE LANE, LANTANA, TX 6226	(940)369-1700
MCMATH	1900 JASON DRIVE, DENTON, TX 76205	(940)369-3300
MYERS	131 GARZA RD, SHADY SHORES, TX 76208	(940)369-1500
NAVO	1701 NAVO RD, AUBREY, TX 76227	(972)347-7500
RODRIGUEZ	8650 MARTOP ROAD, OAK POINT, TX 76227	(972)347-7050
STRICKLAND	3003 N BELL AVE, DENTON, TX 76209	(940)369-4200



Last Modified: July 2021



tdemographics.com

DENTON INDEPENDENT SCHOOL DISTRICT

NAVO MIDDLE SCHOOL ATTENDANCE ZONE



Schools

- ★ Elementary School
- ★ Middle School
- ★ High School
- ★ Alternative

Roads

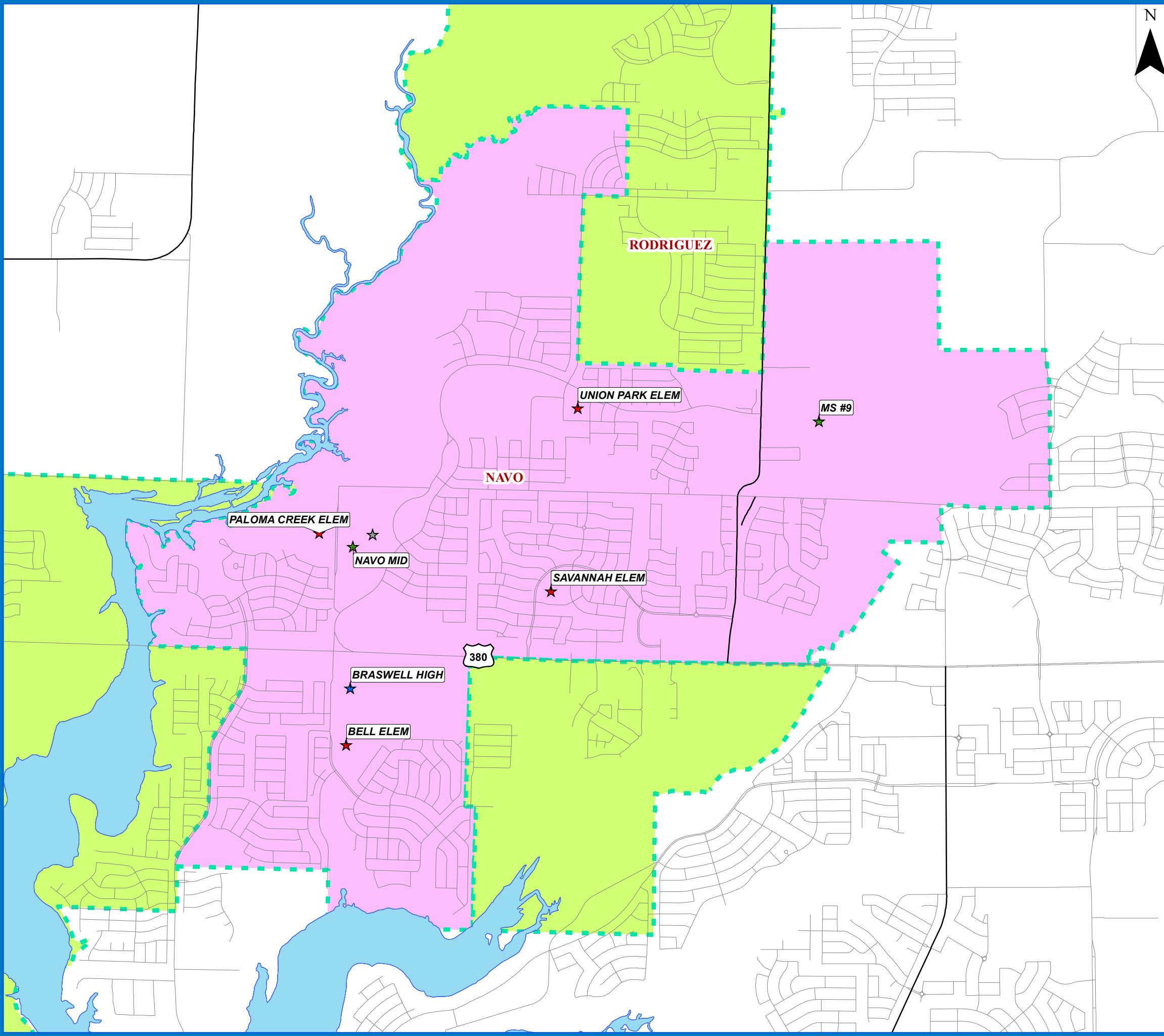
- Local Roads
- Major Arterial
- Secondary Highway
- Primary Highway

Lake Lewisville

- Lake Lewisville

Middle Boundaries

CALHOUN	709 CONGRESS ST, DENTON, TX 76201	(940)369-2400
CROWNOVER	1901 CREEKSIDE DR, CORINTH, TX 76210	(940)369-4700
HARPOOL	9601 STACEE LANE, LANTANA, TX 6226	(940)369-1700
MCMATH	1900 JASON DRIVE, DENTON, TX 76205	(940)369-3300
MYERS	131 GARZA RD, SHADY SHORES, TX 76208	(940)369-1500
NAVO	1701 NAVO RD, AUBREY, TX 76227	(972)347-7500
RODRIGUEZ	8650 MARTOP ROAD, OAK POINT, TX 76227	(972)347-7050
STRICKLAND	3003 N BELL AVE, DENTON, TX 76209	(940)369-4200



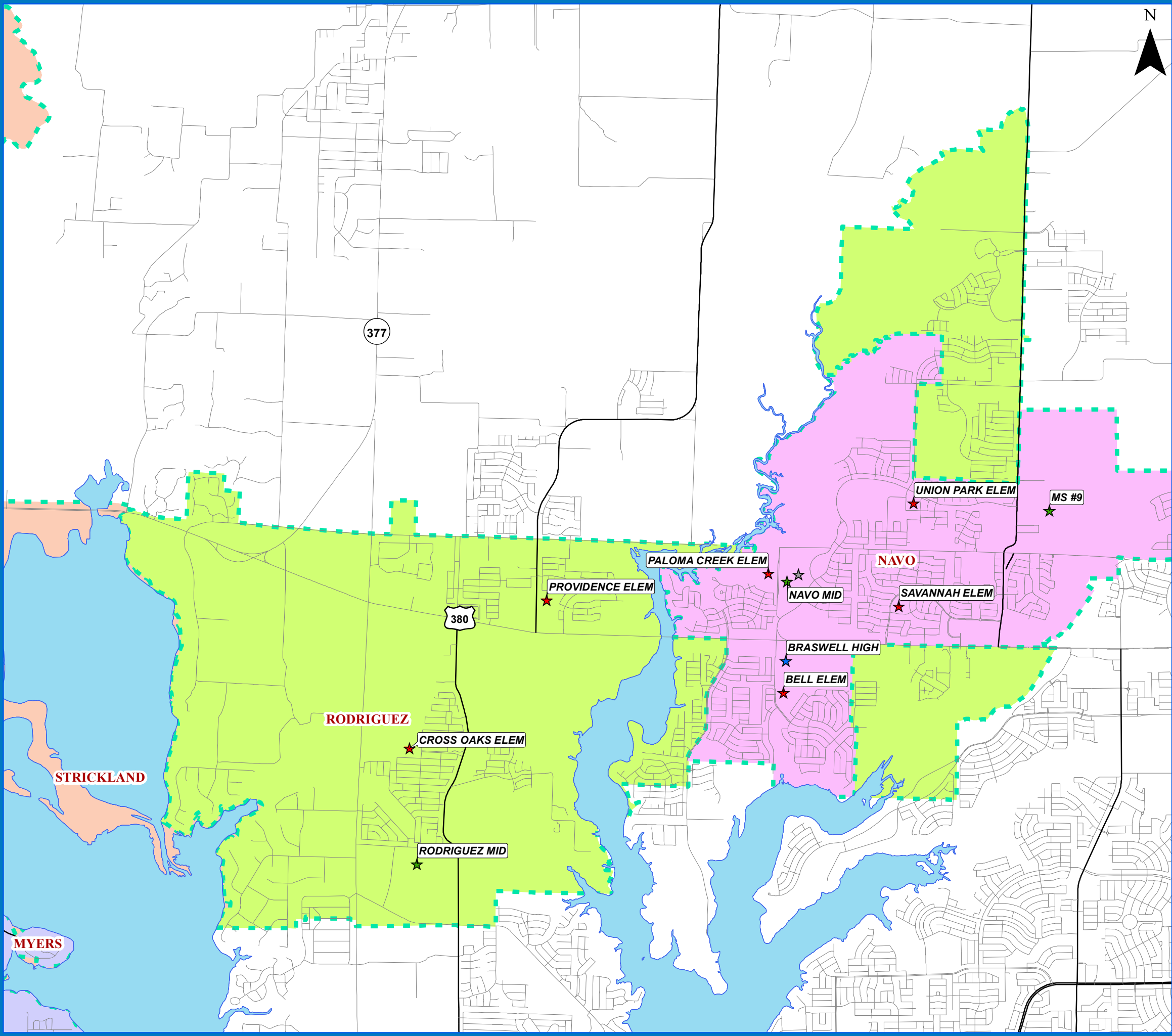
Last Modified: July 2021



tdemographics.com

DENTON INDEPENDENT SCHOOL DISTRICT

RODRIGUEZ MIDDLE SCHOOL ATTENDANCE ZONE



- Schools**
- ★ Elementary School
 - ★ Middle School
 - ★ High School
 - ★ Alternative
- Roads**
- Local Roads
 - Major Arterial
 - Secondary Highway
 - Primary Highway
- Lake Lewisville**
- Lake Lewisville

Middle Boundaries

CALHOUN	709 CONGRESS ST, DENTON, TX 76201	(940)369-2400
CROWNOVER	1901 CREEKSIDE DR, CORINTH, TX 76210	(940)369-4700
HARPOOL	9601 STACEE LANE, LANTANA, TX 6226	(940)369-1700
MCMATH	1900 JASON DRIVE, DENTON, TX 76205	(940)369-3300
MYERS	131 GARZA RD, SHADY SHORES, TX 76208	(940)369-1500
NAVO	1701 NAVO RD, AUBREY, TX 76227	(972)347-7500
RODRIGUEZ	8650 MARTOP ROAD, OAK POINT, TX 76227	(972)347-7050
STRICKLAND	3003 N BELL AVE, DENTON, TX 76209	(940)369-4200

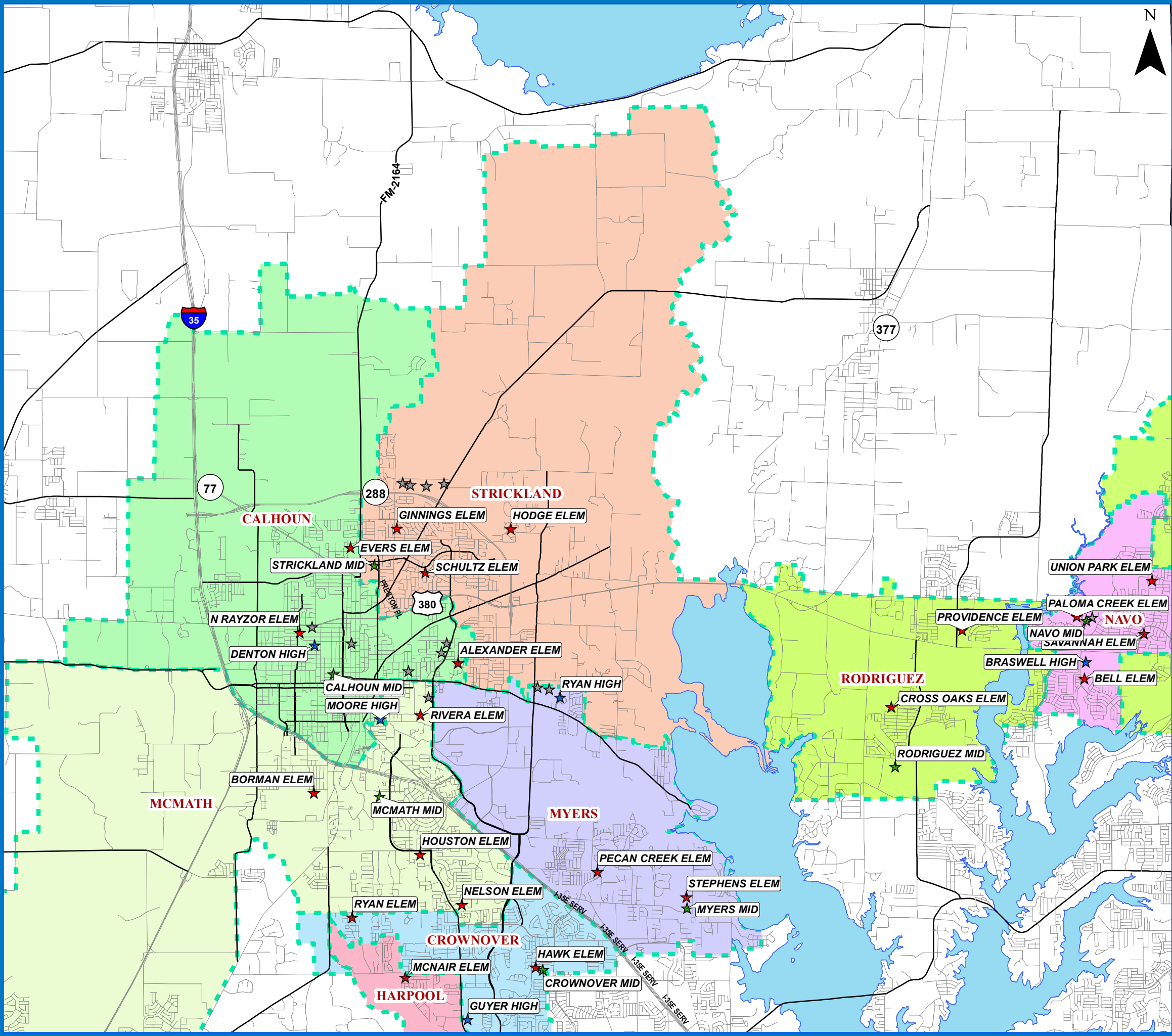


Last Modified: July 2021



DENTON INDEPENDENT SCHOOL DISTRICT

STRICKLAND MIDDLE SCHOOL ATTENDANCE ZONE



- Schools**
- ★ Elementary School
 - ★ Middle School
 - ★ High School
 - ★ Alternative
- Roads**
- Local Roads
 - Major Arterial
 - Secondary Highway
 - Primary Highway
- Lake Lewisville**
- Lake Lewisville

Middle Boundaries

CALHOUN	709 CONGRESS ST, DENTON, TX 76201	(940)369-2400
CROWNOVER	1901 CREEKSIDE DR, CORINTH, TX 76210	(940)369-4700
HARPOOL	9601 STACEE LANE, LANTANA, TX 6226	(940)369-1700
MCMATH	1900 JASON DRIVE, DENTON, TX 76205	(940)369-3300
MYERS	131 GARZA RD, SHADY SHORES, TX 76208	(940)369-1500
NAVO	1701 NAVO RD, AUBREY, TX 76227	(972)347-7500
RODRIGUEZ	8650 MARTOP ROAD, OAK POINT, TX 76227	(972)347-7050
STRICKLAND	3003 N BELL AVE, DENTON, TX 76209	(940)369-4200



Last Modified: July 2021

