

# Cross Oaks Morning Arrival Guidelines For Parents Driving Students to School

Parents can park in the Liberty Blvd. lot and walk their students into the cafeteria. Parents are welcome to join their children for breakfast, and may walk them to class beginning at 7:35.

Due to heavy vehicle traffic, children should never be dropped off in this parking lot or allowed to walk through the lot unaccompanied by an adult.



**Car drop-off lane  
7:20 – 7:50 am**

**Parents park & walk students  
into the cafeteria  
7:20 – 7:50 am**

**Bus and daycare  
drop-off**

**Car drop-off lane  
AFTER 7:50 am**

**Parents park & walk students  
in at front of building  
After 7:35 am**

Please pull up to the farthest cone and come to a full stop. A safety patrol or staff member will open your door and help your child out of your vehicle.

Parents are welcome to park in the Tumbleweed Dr. lot and walk students into the building. The foyer doors will unlock at 7:35 for parents wishing to walk children to class.

For their safety, children should only walk through the parking lot escorted by an adult.

Please do not drop children off in front of the school before 7:50. Instead, use the drop-off lane around the back of the school.

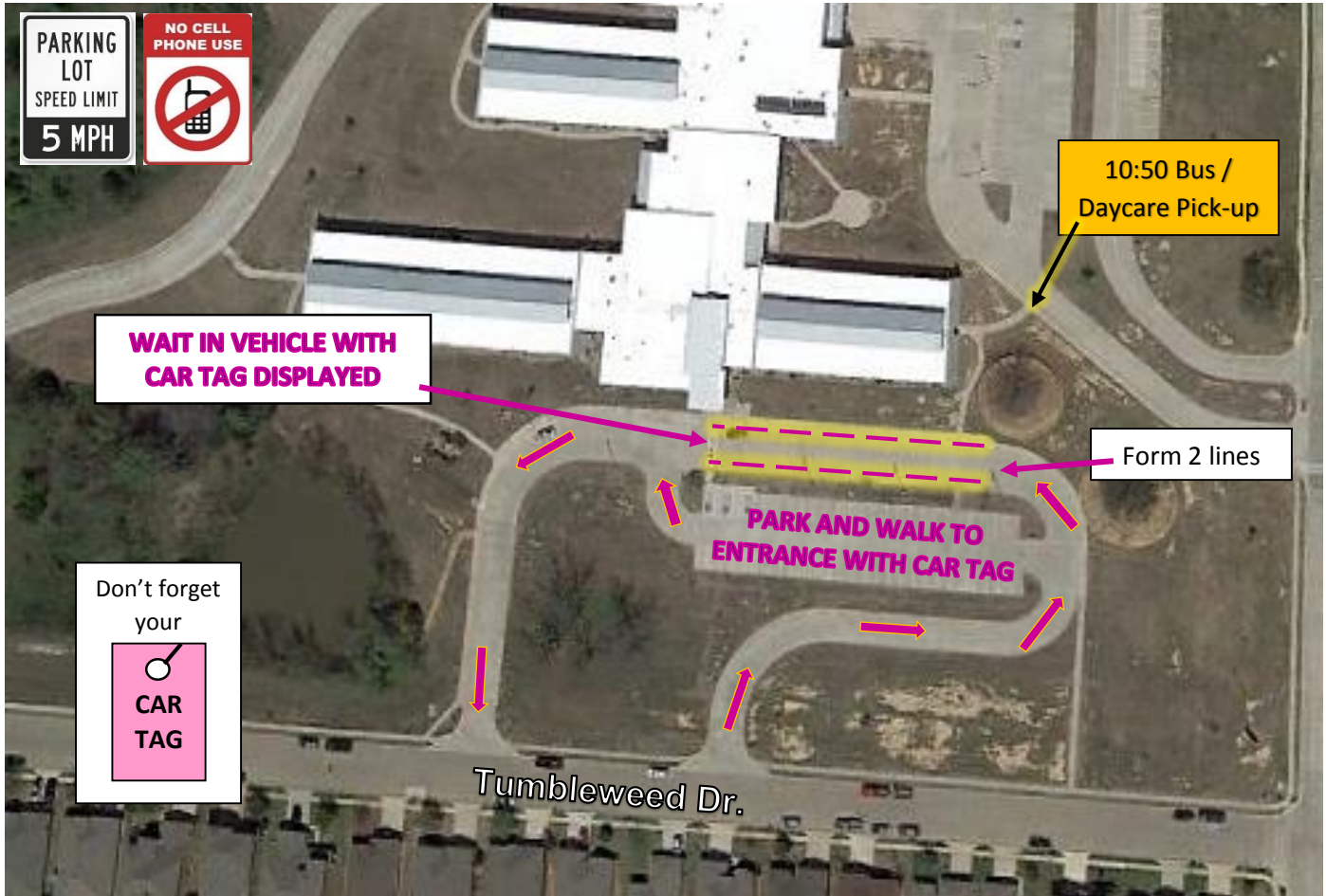
# Cross Oaks Morning Arrival Guidelines **For Students Walking or Biking to School**



## Guidelines for students walking or biking to school:

- Be safe by only crossing the street using a crosswalk, and always look both ways for cars before crossing. When a crossing guard is present, be a good listener and always follow their directions.
- Walkers should remain on sidewalks at all times, and never walk in the street or parking lot. For their safety, we strongly recommend that students walk in groups or with an adult. This especially applies to our younger children.
- Once on campus, bicycle riders should walk their bikes to the bike racks.
- Walkers arriving between 7:20 and 7:50 am can enter through the cafeteria. The exterior cafeteria doors will lock at 7:50. Walkers arriving after 7:35 am can also enter at the front of the school. All other entrances will be locked.
- Students should be in classrooms by 7:50 am, or else they will be counted tardy.
- All campus rules apply when on school property. Students who do not follow the codes of conduct while on campus grounds will be subject to consequences, even if the behavior occurs before or after school.

# Cross Oaks Morning Dismissal Guidelines (AM Pre-K/PPCD) **For Parents Picking Students Up at 10:50**



Parents may choose to:

1. Park their vehicle in a parking lot space, walk to the front entrance with their car tag, and pick their child up at the door, or
2. Stay in their vehicle with car tag displayed, and a staff member will escort your child to your car. Cars will form two lines against the left and right curb at the front drive.

Please follow traffic directions given by staff members to maintain safety and keep the line moving.

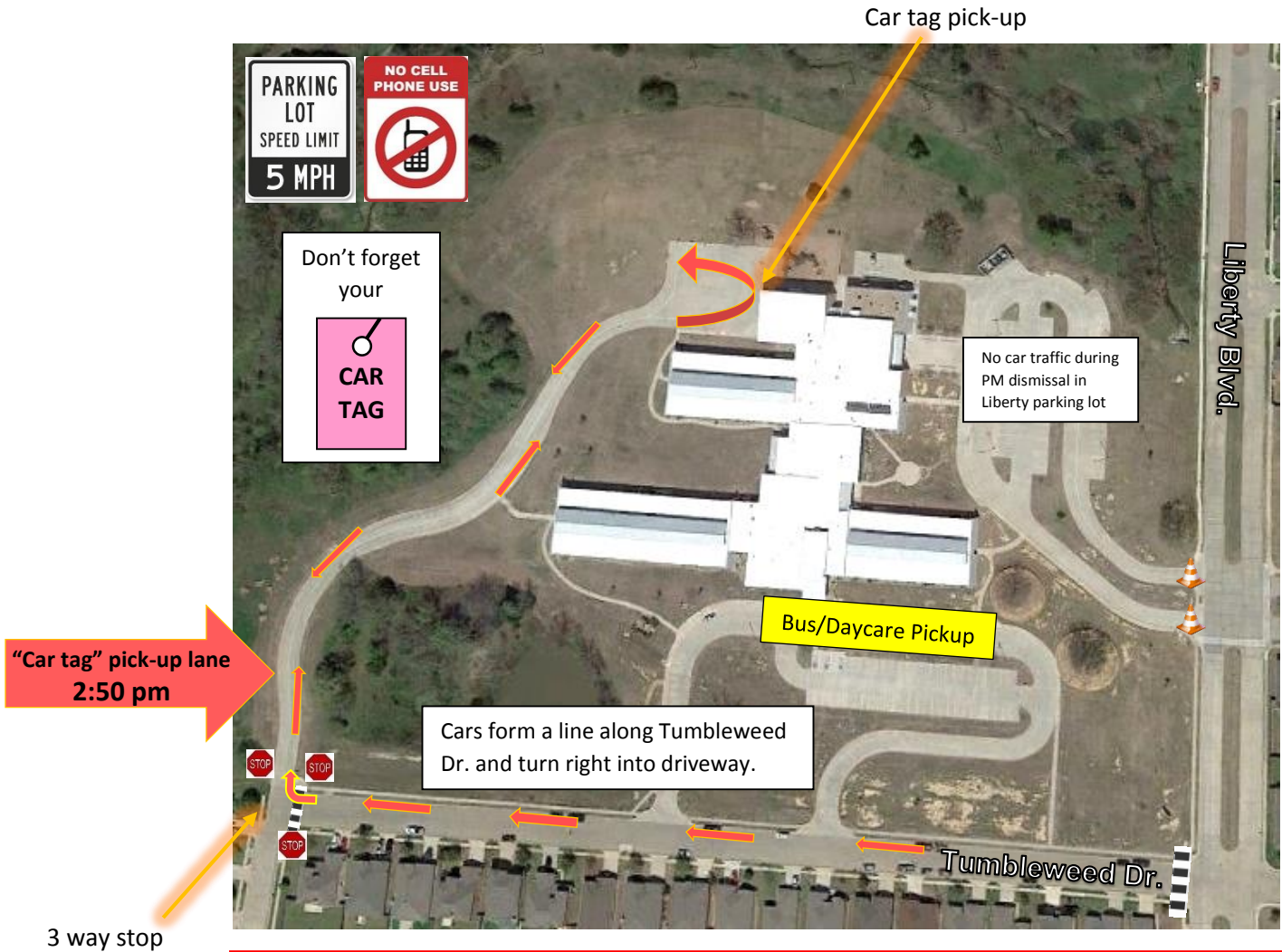


Cross Oaks Afternoon Arrival Guidelines (PM Pre-K/PPCD)  
**For Parents Dropping Students Off at 11:50**



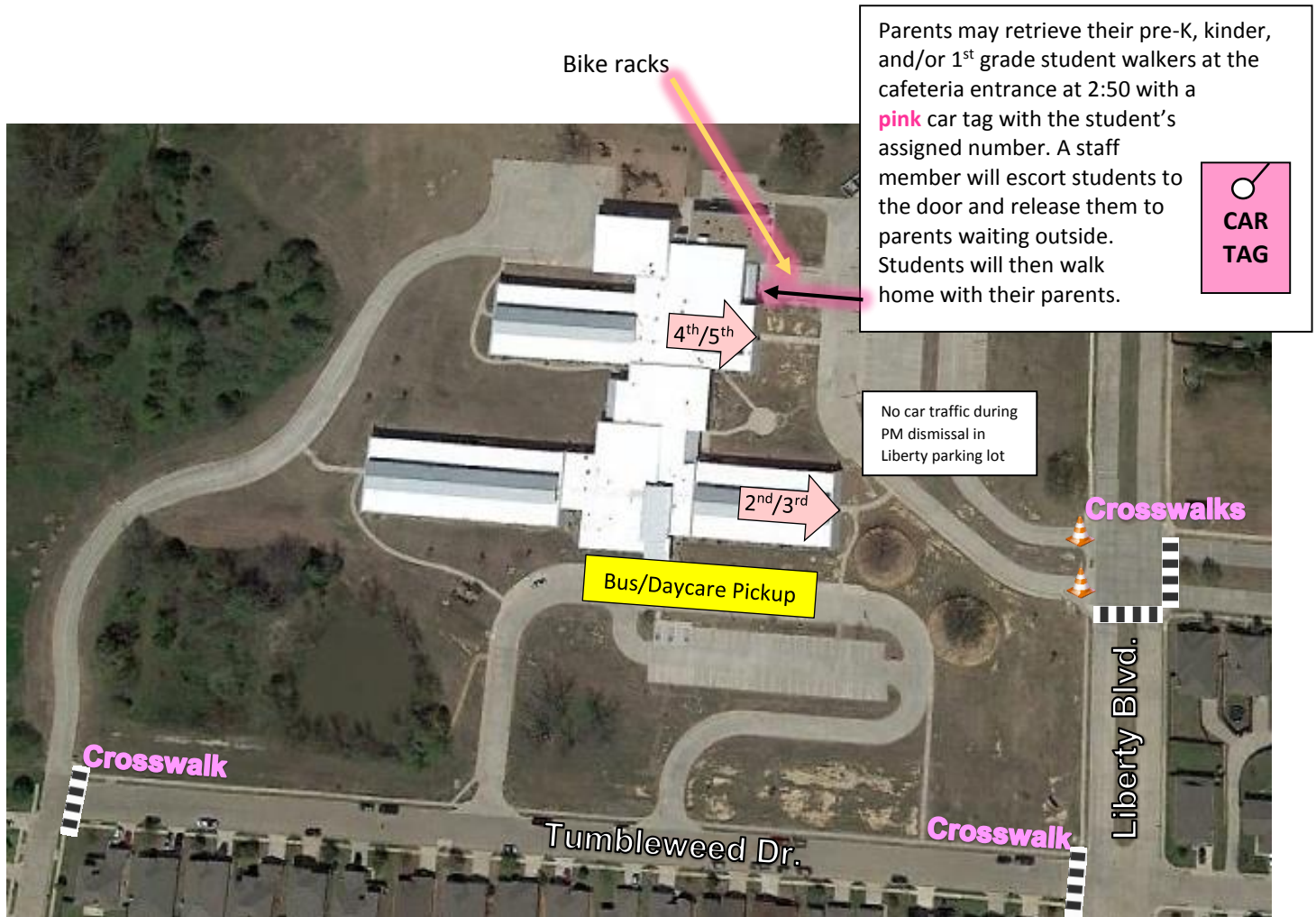
Parents should park their vehicle in a parking lot space and walk their child to the front entrance of the school, where they will be received by a staff member at 11:50 am.

# Cross Oaks Afternoon Dismissal Guidelines **For Parents Picking Students Up by Car (“Car Tag”)**



- **All vehicles must have a pink car tag clearly displayed.** If a car does not have a tag, they will have to park at the front of the school, show a valid ID, and sign the child out once dismissal procedures are complete for the day.
- To keep traffic moving smoothly, please form a line of cars along Tumbleweed before turning right into driveway. Do not enter car tag line from Corral St.
- Once at the circle outside the gym, please pull up to the farthest bucket where a staff member will be waiting. Another staff member will escort your child to your vehicle.
- **Please do not exit your vehicle.** A staff member will open your door and help your child in.
- If you need to buckle a car seat, please carefully pull into the middle of the circle so traffic can continue moving.
- Thank you for your patience! These procedures tend to take longer at the beginning of the school year while students, staff, and parents practice dismissing safely.

# Cross Oaks Afternoon Dismissal Guidelines For Students Walking or Biking Home from School



Parents may retrieve their pre-K, kinder, and/or 1<sup>st</sup> grade student walkers at the cafeteria entrance at 2:50 with a **pink** car tag with the student's assigned number. A staff member will escort students to the door and release them to parents waiting outside. Students will then walk home with their parents.

**CAR TAG**

No car traffic during PM dismissal in Liberty parking lot

Students in 2<sup>nd</sup> or 3<sup>rd</sup> grade are dismissed at 2:50 at the end of their hallway.

Students in 4<sup>th</sup> or 5<sup>th</sup> grade are dismissed at 2:50 at the end of the music hallway.

Students in pre-k, kindergarten, and 1<sup>st</sup> grade will only be released to walk home with an older sibling in grades 2<sup>nd</sup>-5<sup>th</sup> or with a 2<sup>nd</sup>-5<sup>th</sup> student designated by the parent in writing.

- Guidelines for Students Walking or Biking Home from School**
- Bike riders will walk next to their bikes until they have crossed the street off campus grounds.
  - All walkers and bikers should stay on the sidewalk at all times, not in the grass or parking lot.
  - For their safety, students should walk and never run while leaving school grounds.
  - Students should only cross the street at a designated cross walk. Listen carefully to cross guards and follow their directions carefully to stay safe.